



# FLEX *Lab Table*

The FLEXLINE Lab Table comfortably accommodates Science, Technology, Engineering & Mathematics! This dynamic, multi-discipline lab table incorporates mobility and height adjustability to maximize usable workspace and promote student collaboration. The FLEXLINE Lab Table creates an interactive learning environment for any 21st century science room.

- *Welded Steel Framing*
- *Height Adjustable Option // 30" to 40"*
- *Variety of Countertop Options*
- *Plumbing Services, Electric & Data Capable*
- *Optional Heavy Duty Casters*
- *Under Storage Options*

LONGO  
// ASSOCIATES INC.

6 fE0A f. B0>6 . p | TMS X™ EE™/ f 0>E fS /  
0 0 0 | TMS X™ | . E / T™

# FLEXLINE *Lab Table*

## Features

WELDED STEEL FRAME

EPOXY POWDER COAT FINISH ON BASE

UP TO 8 ELECTRIC PORTS // 120V DUPLEXES / GFI

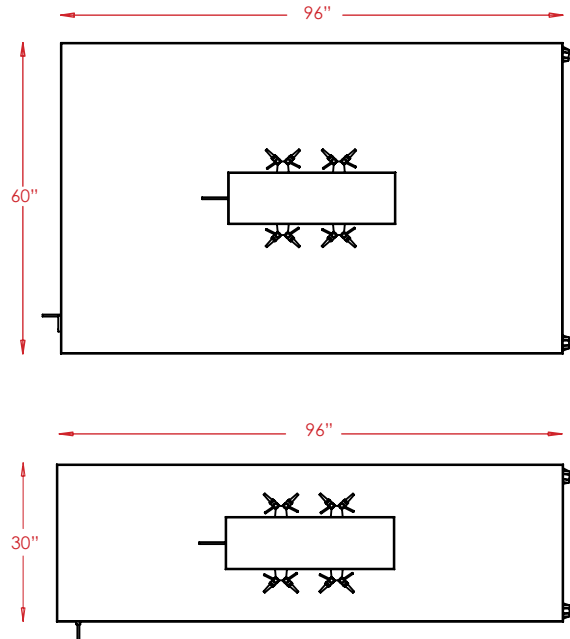
4" HEAVY DUTY CASTERS

UNDER ACCES THROUGH PANEL

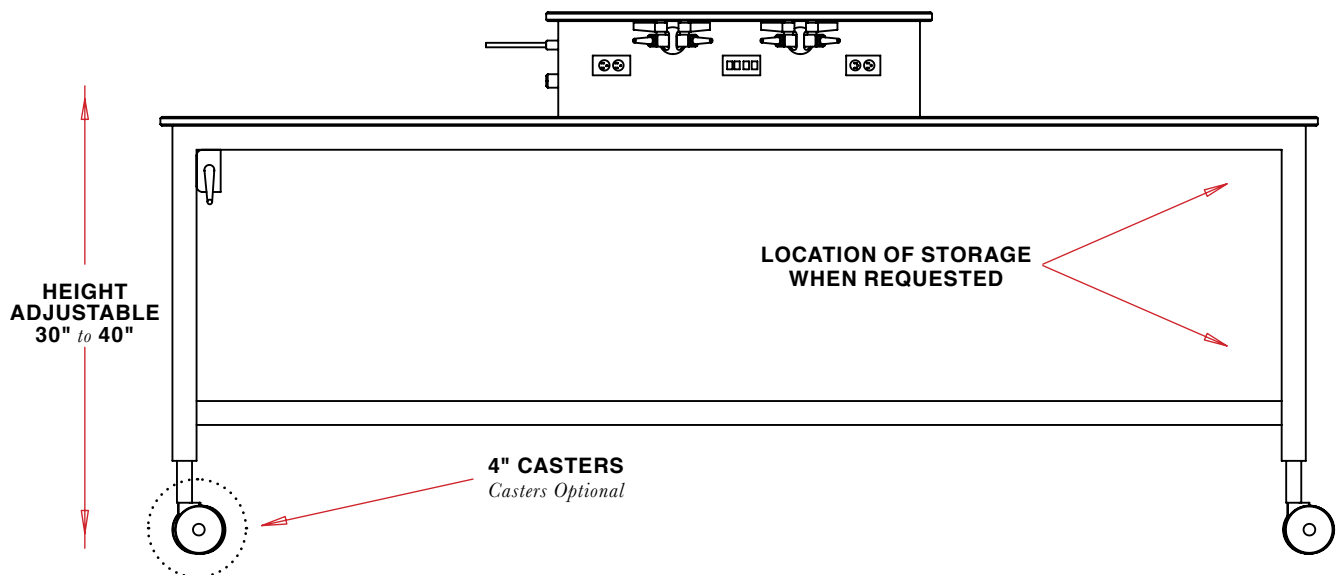
CENTER CORE SERVICE UMBILICAL

TABLETOP // L96" X W30"/60"

## Dimensions

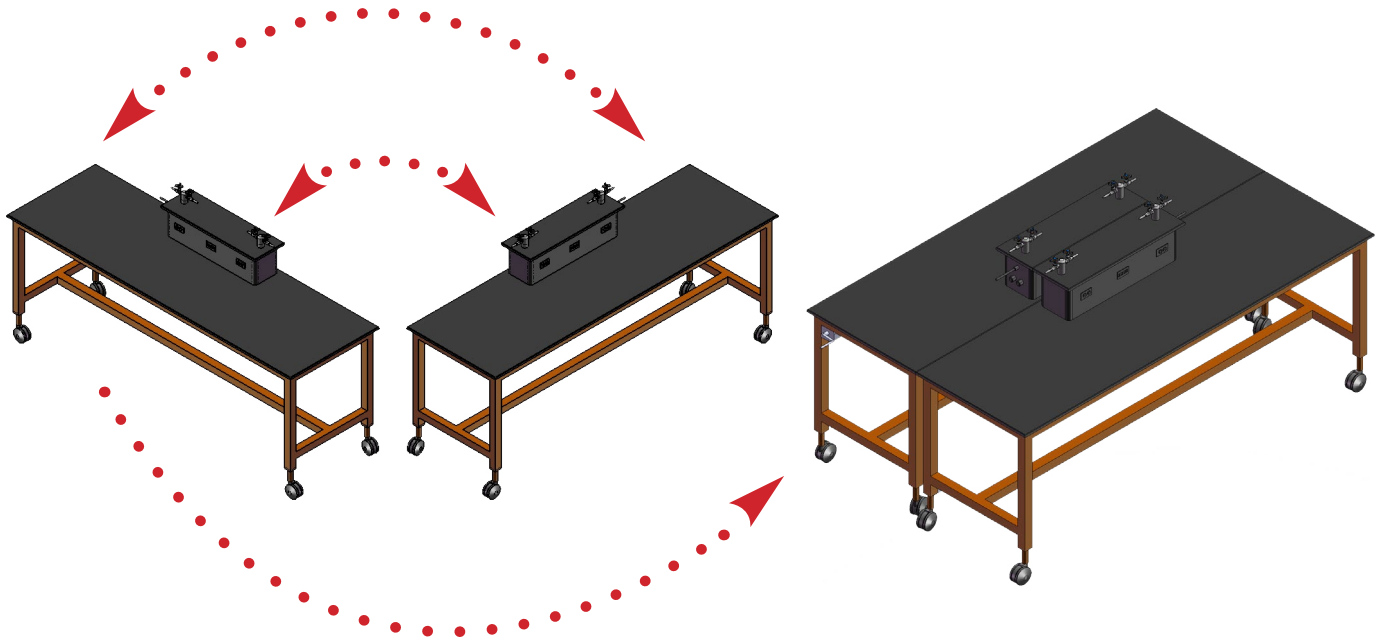


TABLETOP DIMENSIONS

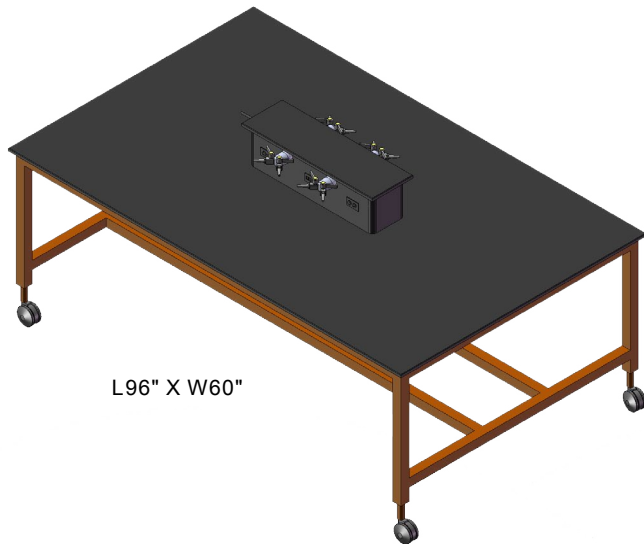


MOBILE LAB TABLE  
*Shown with 4" Casters*

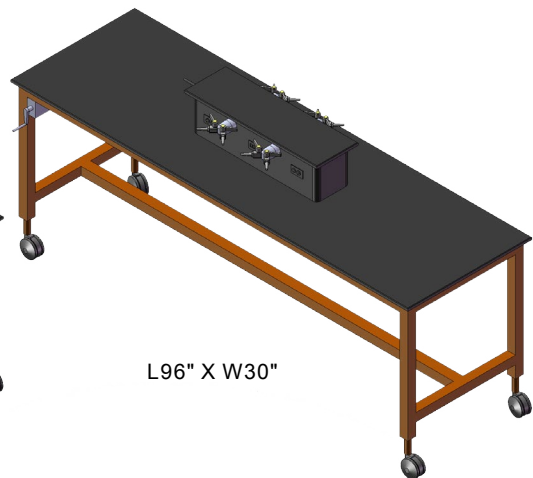
*Mobile Configuration & Colors*



**SAMPLE TABLE CONFIGURATION**  
*2 - 30" Tables Pushed Together*



L96" X W60"



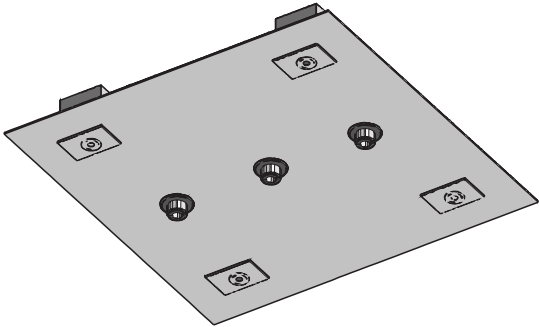
L96" X W30"

*\* Frames Available in All RAL Colors*

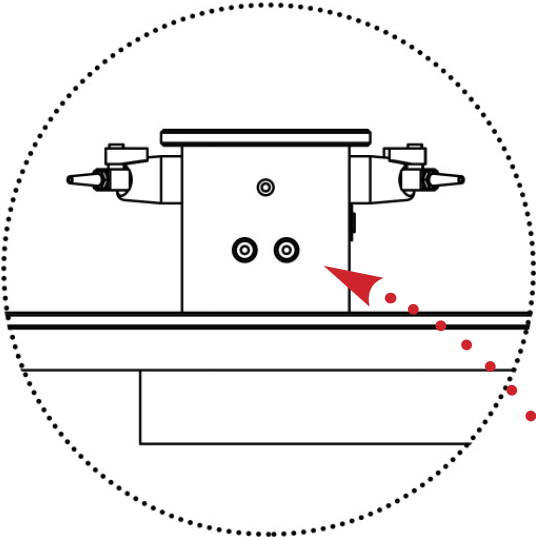


# FLEXLINE *Lab Table*

## *Services & Options*

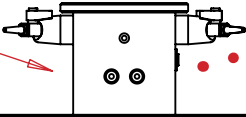


**SERVICE PANEL**  
*Quick Connect Services from Ceiling*

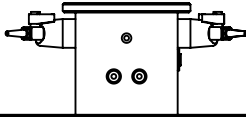


**FIXTURE INLET CONNECTION**  
*Enlargement of Center Island*

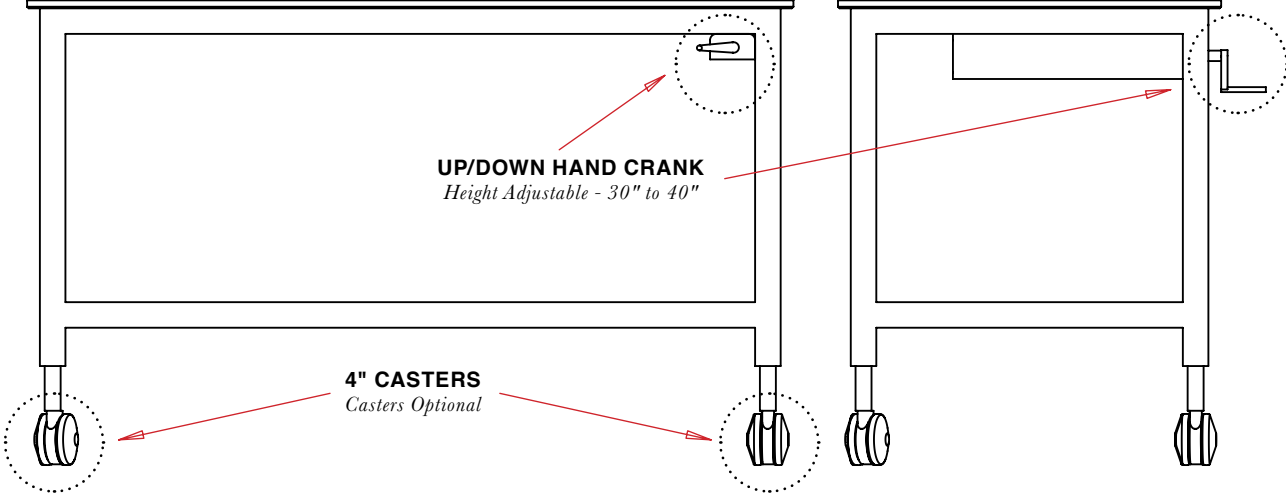
**METAL CENTER ISLAND**  
*with Center Core Service Umbilical*



**UP/DOWN HAND CRANK**  
*Height Adjustable - 30" to 40"*



**4" CASTERS**  
*Castors Optional*



## Options

QUICK CONNECT SERVICES FROM CEILING OR FLOOR

WORK SURFACE // EPOXY RESIN / PHENOLIC RESIN /  
PLASTIC LAMINATE / STAINLESS STEEL

AVAILABLE WITH 4" CASTERS

ADJUSTABLE HEIGHT // 30" TO 40"

SHELVING / CABINETS / DRAWERS / COMBINATION



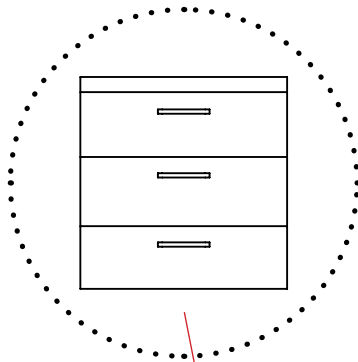
**QUICK CONNECT SERVICES**  
*from Ceiling or Floor*



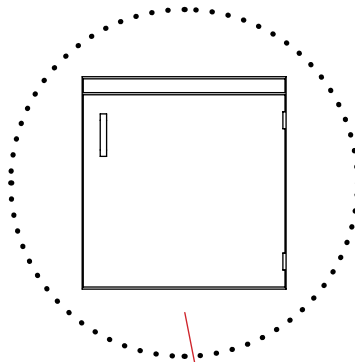
# FLEXLINE *Lab Table*

## *Storage Options & Accessories*

**3 - DRAWER CABINET**  
*Suspended Storage Option*



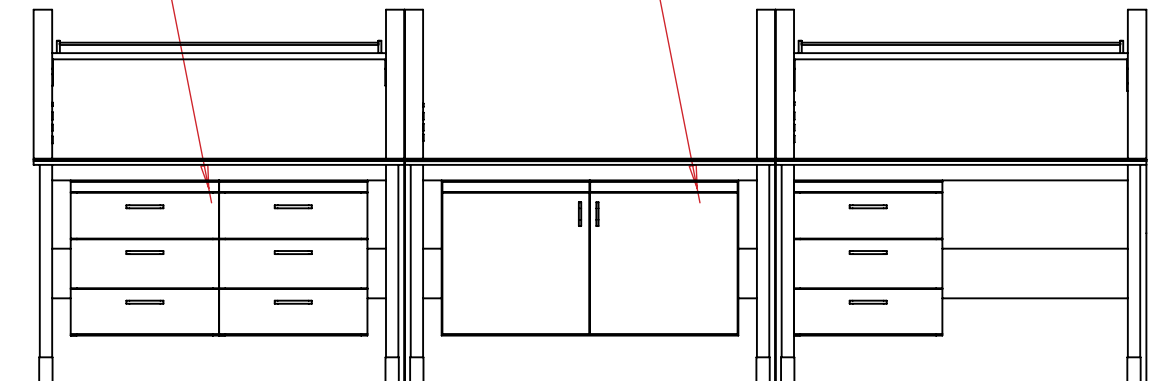
**1 - DOOR CUPBOARD**  
*Suspended Storage Option*



### *Additional Options*

**SHELVING**  
*Suspended or Upright*

**COMBINATION STORAGE**  
*Drawer, Shelving & Cabinet Combo*



### *Accessories*

FOOTREST // BOLT TO FRAME OR STAND ALONE

SHELVING // BACKSTOP OR SLOTTED DIVIDERS

BOLT ON MONITOR ARM

UNDER SHELF TASK LIGHTING

OVERHEAD LIGHTS // FLUORESCENT OR LED

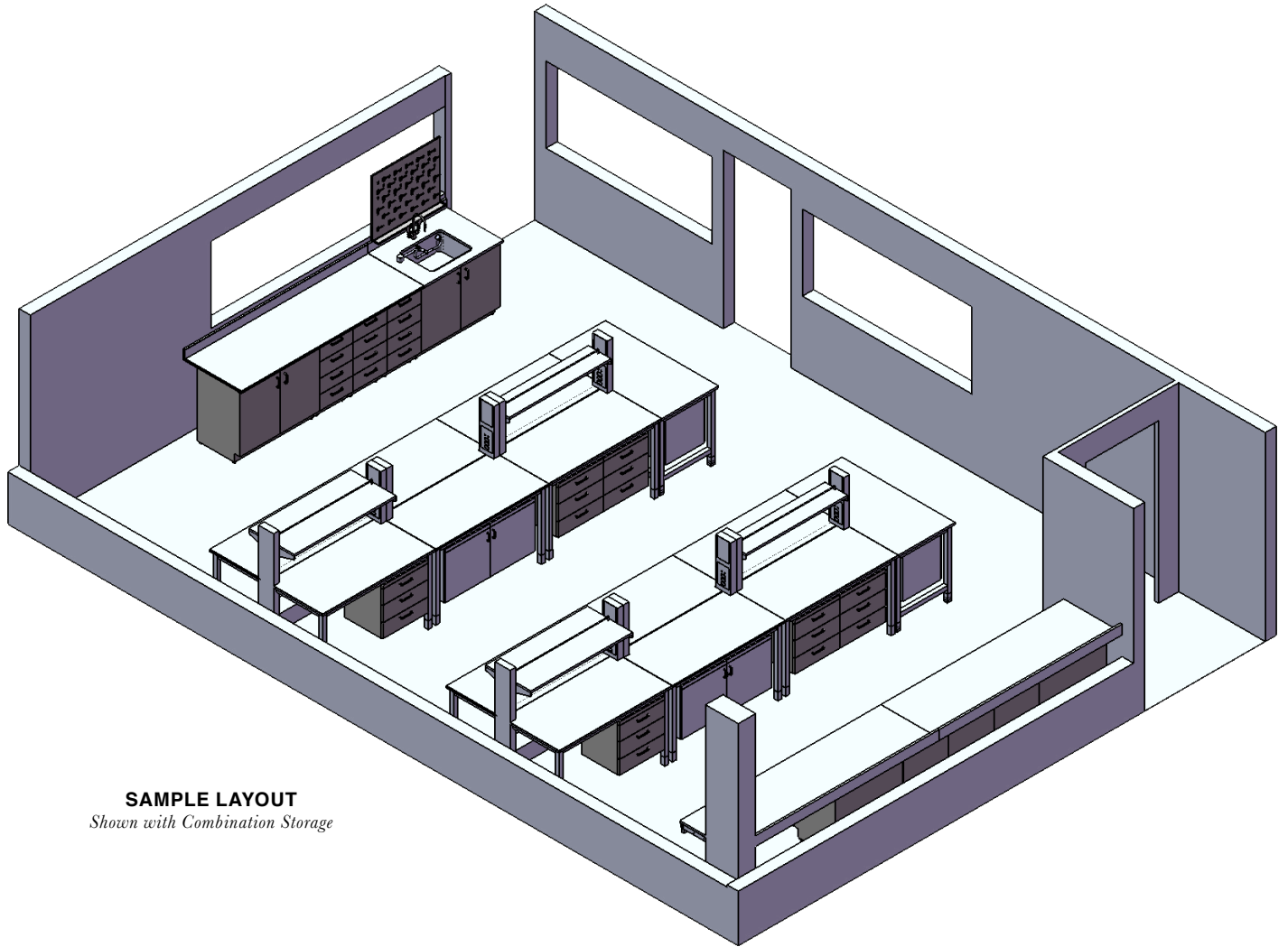
RAIL BINS

VIBRATION CONTROL LEVELERS

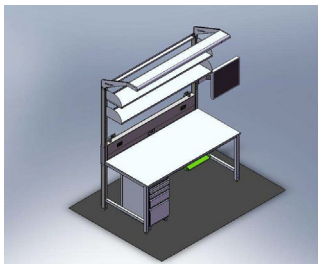
LEVELING FEET WITH FLOOR MOUNTABLE BRACKET

POWER STRIPS 15 OR 20 AMP

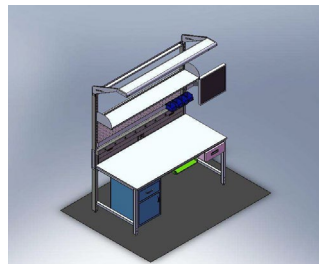
# Flexline Bench System



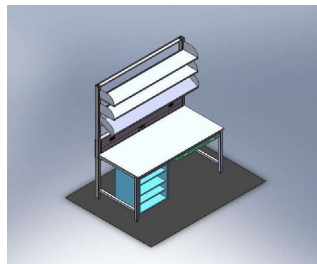
**SAMPLE LAYOUT**  
*Shown with Combination Storage*



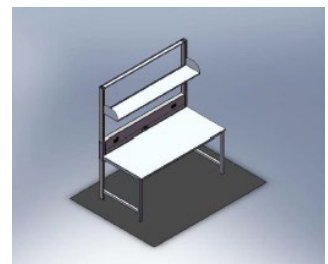
**CUPBOARD**



**DRAWERS**



**SHELVING**



**STANDARD**



# FLEXLINE *Lab Table*



L O N G O

// ASSOCIATES INC.

6 f E Ø Å f . B Ø > 6 . p | T M S X T M E E T M / f Ø > E f S /  
Ø Ø Ø | T M S X T M | . E / T M

## Contact us

800.635.6646

info@longoinc.com

## Visit us online

LONGOLABS.COM

## About Us

*For over 4 decades, Labscape has been planning, designing, and creating state-of-the-art workspace solutions for school science labs and commercial laboratories. At Labscape, we commit ourselves to a level of unsurpassed service which ensures that your laboratory environment will meet all necessary guidelines. Whether it's research specifications, Federal ADA compliancy, important regulatory requirements or multi-user needs, we take our partnership role very seriously. All laboratories are complex, sophisticated and expensive workspaces.*

*From educational science labs to forensics facilities, you can count on us. Labscape is your solution for a professionally designed laboratory with optimal safety, precise installation and maximum function. Let's create a place for you, where major discoveries and breakthroughs are made.*