



FLEX *Lab Table*

The FLEXLINE Lab Table comfortably accommodates Science, Technology, Engineering & Mathematics! This dynamic, multi-discipline lab table incorporates mobility and height adjustability to maximize usable workspace and promote student collaboration. The FLEXLINE Lab Table creates an interactive learning environment for any 21st century science room.

- *Welded Steel Framing*
- *Height Adjustable Option // 30" to 40"*
- *Variety of Countertop Options*
- *Plumbing Services, Electric & Data Capable*
- *Optional Heavy Duty Casters*
- *Under Storage Options*

L O N G O

// ASSOCIATES INC.

6 fE0Äf. B0>6 . p | TMSX™ EE™/f 0>E fS /
0 0 0 | TMSX™ | . E / TM^

FLEXLINE Lab Table

Features

WELDED STEEL FRAME

EPOXY POWDER COAT FINISH ON BASE

UP TO 8 ELECTRIC PORTS // 120V DUPLEXES / GFI

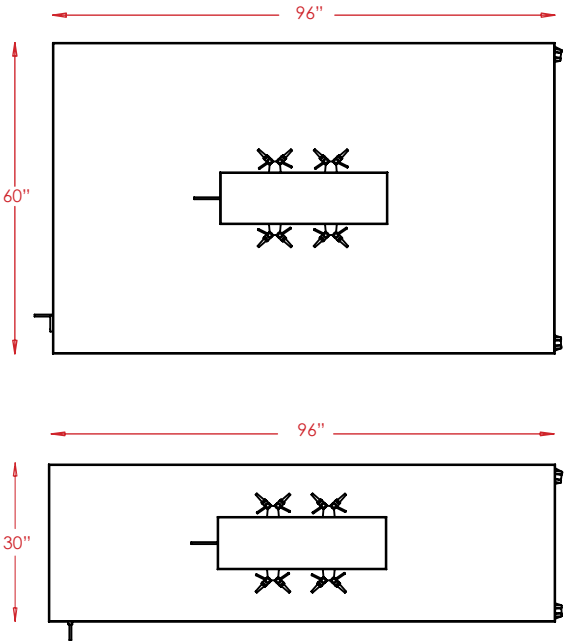
4" HEAVY DUTY CASTERS

UNDER ACCES THROUGH PANEL

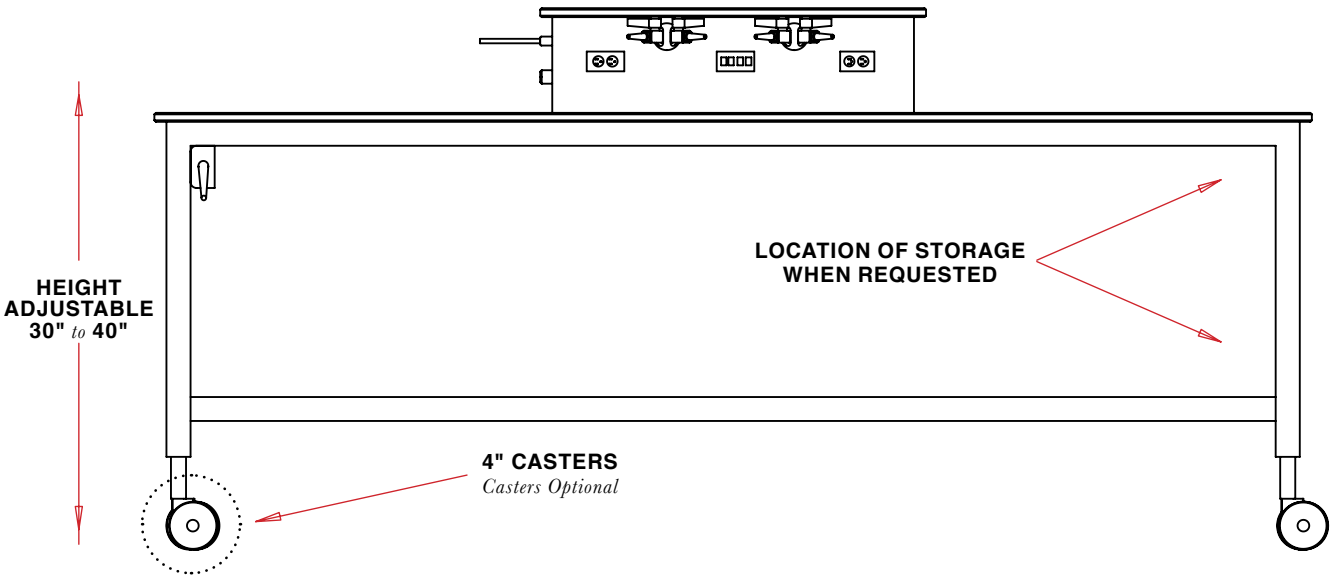
CENTER CORE SERVICE UMBILICAL

TABLETOP // L96" X W30"/60"

Dimensions

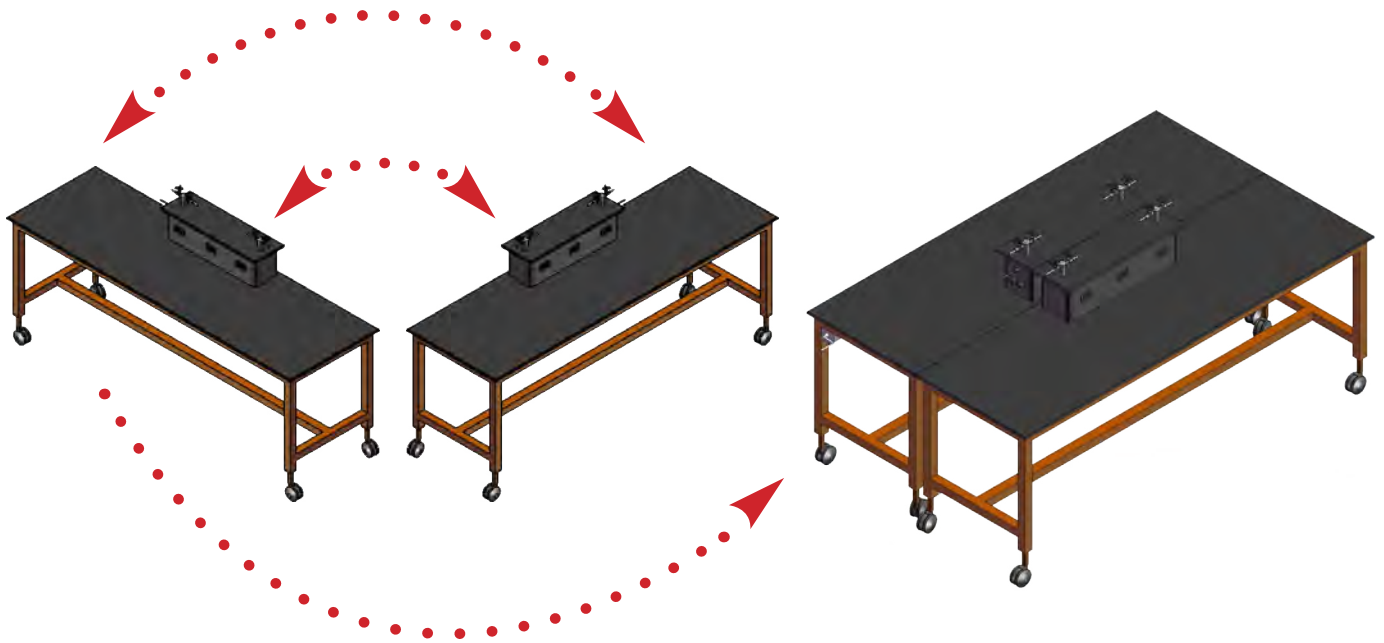


TABLETOP DIMENSIONS

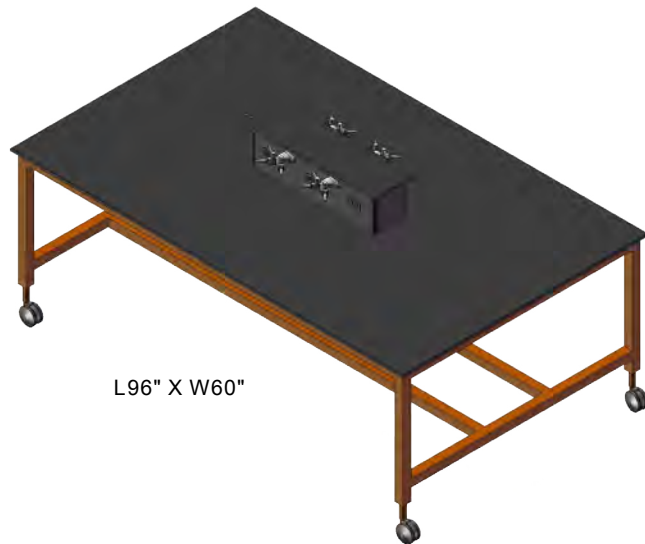


MOBILE LAB TABLE
Shown with 4" Casters

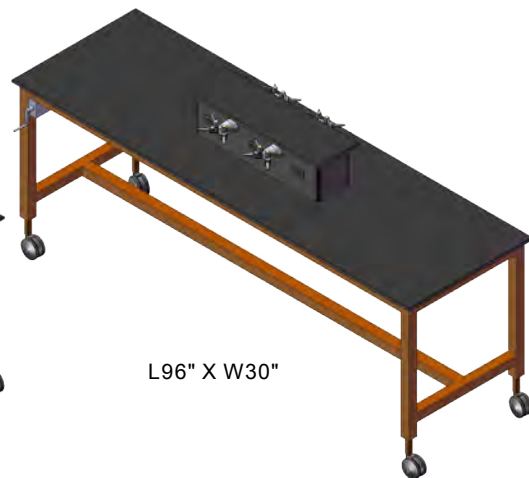
Mobile Configuration & Colors



SAMPLE TABLE CONFIGURATION
2 - 30" Tables Pushed Together



L96" X W60"



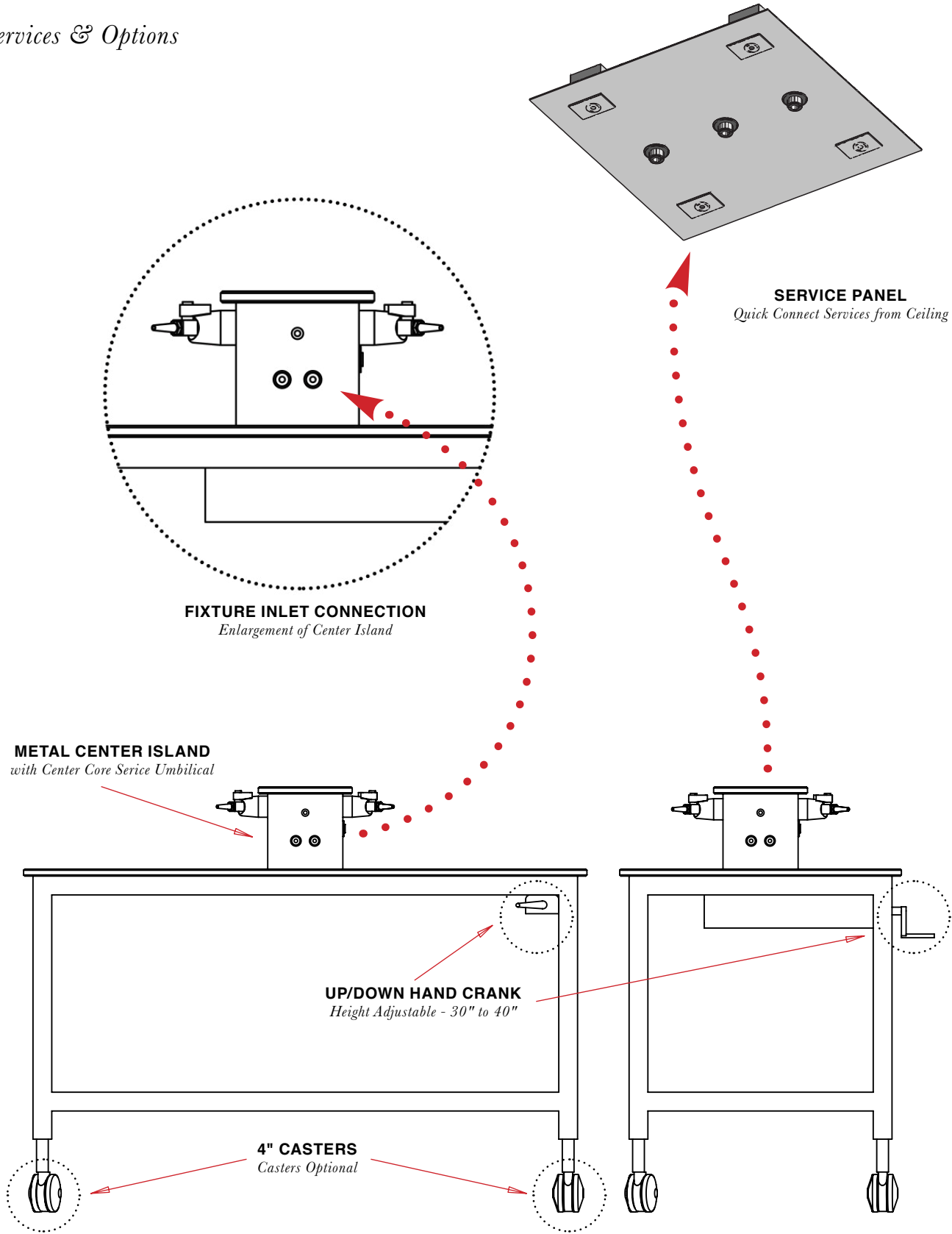
L96" X W30"

** Frames Available in All RAL Colors*



FLEXLINE Lab Table

Services & Options



Options

QUICK CONNECT SERVICES FROM CEILING OR FLOOR

WORK SURFACE // EPOXY RESIN / PHENOLIC RESIN /
PLASTIC LAMINATE / STAINLESS STEEL

AVAILABLE WITH 4" CASTERS

ADJUSTABLE HEIGHT // 30" TO 40"

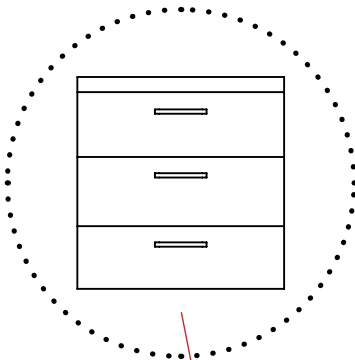
SHELVING / CABINETS / DRAWERS / COMBINATION

QUICK CONNECT SERVICES
from Ceiling or Floor

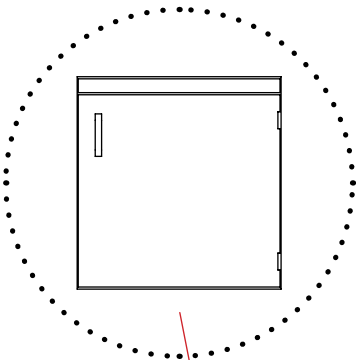
FLEXLINE *Lab Table*

Storage Options & Accessories

3 - DRAWER CABINET
Suspended Storage Option



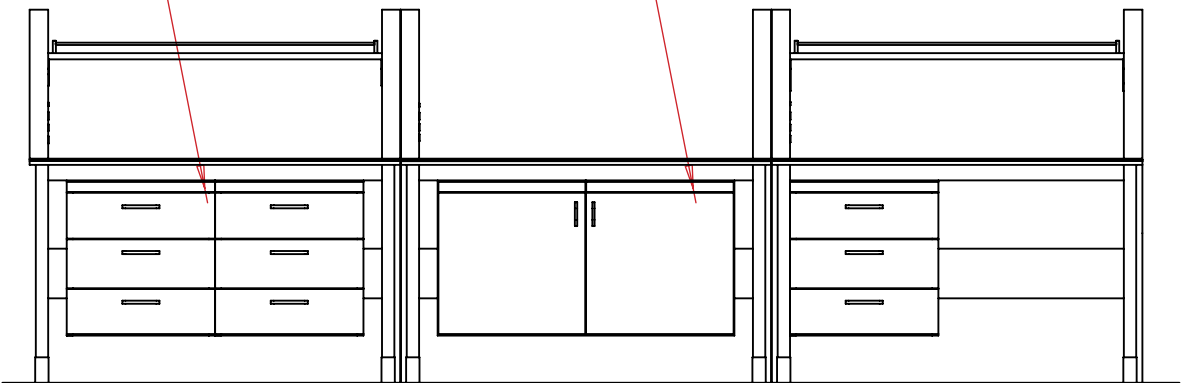
1 - DOOR CUPBOARD
Suspended Storage Option



Additional Options

SHELVING
Suspended or Upright

COMBINATION STORAGE
Drawer, Shelving & Cabinet Combo



Accessories

FOOTREST // BOLT TO FRAME OR STAND ALONE

SHELVING // BACKSTOP OR SLOTTED DIVIDERS

BOLT ON MONITOR ARM

UNDER SHELF TASK LIGHTING

OVERHEAD LIGHTS // FLUORESCENT OR LED

RAIL BINS

VIBRATION CONTROL LEVELERS

LEVELING FEET WITH FLOOR MOUNTABLE BRACKET

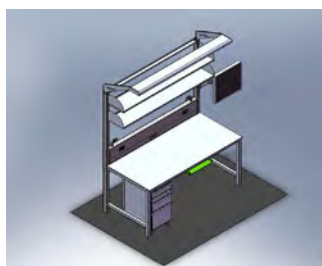
POWER STRIPS 15 OR 20 AMP

Flexline Bench System

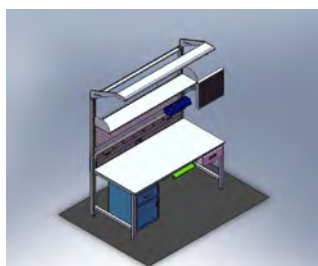


SAMPLE LAYOUT

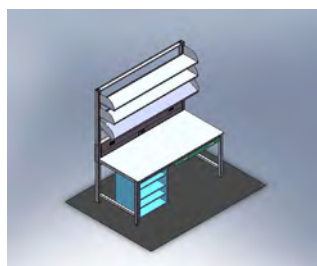
Shown with Combination Storage



CUPBOARD



DRAWERS

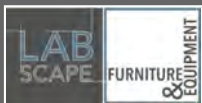


SHELVING



STANDARD

FLEXLINE *Lab Table*



L O N G O
// ASSOCIATES INC.

6 fE0Äf. B0>6 . p | TMS X™ EE™ / f 0>E fS /
0 0 0 | TMS X™ | . E / TMS

Contact us

800.635.6646

info@longoinc.com

Visit us online

LONGOLABS.COM

About Us

For over 4 decades, Labscape has been planning, designing, and creating state-of-the-art workspace solutions for school science labs and commercial laboratories. At Labscape, we commit ourselves to a level of unsurpassed service which ensures that your laboratory environment will meet all necessary guidelines. Whether it's research specifications, Federal ADA compliancy, important regulatory requirements or multi-user needs, we take our partnership role very seriously. All laboratories are complex, sophisticated and expensive workspaces.

From educational science labs to forensics facilities, you can count on us. Labscape is your solution for a professionally designed laboratory with optimal safety, precise installation and maximum function. Let's create a place for you, where major discoveries and breakthroughs are made.