

# SteamScrubber® Laboratory Glassware Washers

## Features & Benefits



### CleanWorks™ OS

provides intuitive control of washer's cycle programs and performance data.

### Steam Generator

produces hot vapor to penetrate and soften dried contaminants for more effective cleaning.

### Type 304 stainless steel

door and tank. Freestanding models also have stainless steel sides and top.

### Powerful dual pumps

recirculate water to provide thorough cleaning and separate drain pump to reduce the potential for cross-contamination.

### Forced air drying

quickly removes moisture.

### Versatile and easily adjustable rack options

Standard open racks are interchangeable with optional upper and lower spindle racks.

### SpeedVent™ Technology

shortens drying time by venting residual heat from the washer.

### Robust heating

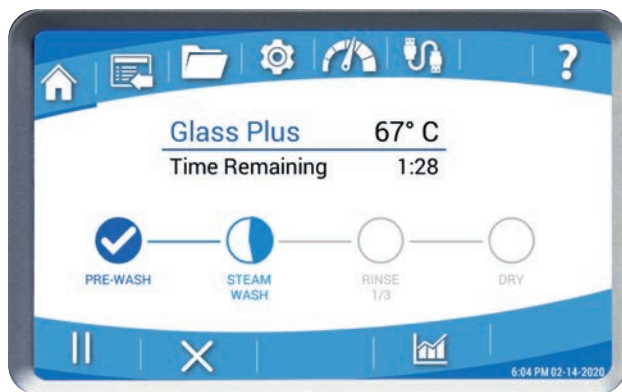
Water temperature reaches 93° C to remove stubborn contaminants.

### Upper & lower racks included

Stainless steel Standard (open) Racks accommodate a variety of optional accessory inserts.

### 2 year warranty

## CleanWorks OS



### Progress Bar

Displays segment progression of a running program from Home screen.

### Programs

Stores up to 200 programs. Users can simply create and store programs.

### Data Logging

View data as table or graph. Customize table view to show up to 6 data columns.

### Accessories

Enable or disable system accessories.

### Diagnostics

Access installation and troubleshooting tools. Results can be exported via USB.

### Data Export

Backup programs and data log files to USB.



# FlaskScrubber® Laboratory Glassware Washers

## Features & Benefits



### CleanWorks™ OS

provides intuitive control of washer's cycle programs and performance data.

### Steam Generator

produces hot vapor to penetrate and soften dried contaminants for more effective cleaning.

### Type 304 stainless steel

door and tank. Freestanding models also have stainless steel sides and top.

### Powerful dual pumps

recirculate water to provide thorough cleaning and separate drain pump to reduce the potential for cross-contamination.

**Forced air drying**  
through spindles.

### Versatile and easily adjustable rack options

Standard open racks are interchangeable with optional upper and lower spindle racks.

### SpeedVent™ Technology

shortens drying time by venting residual heat from the washer.

### Robust heating

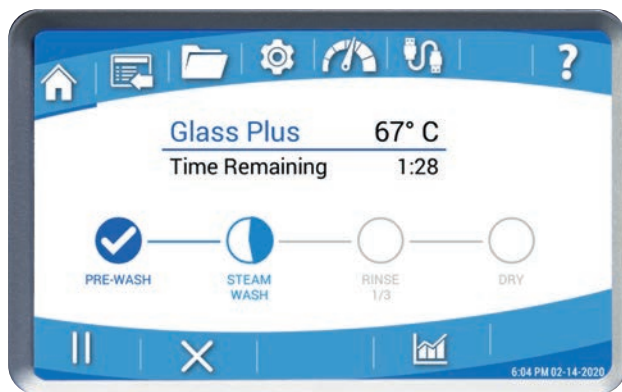
Water temperature reaches 93° C to remove stubborn contaminants.

### Lower Spindle Rack included

with 36 spindles. Accommodates a variety of optional accessory inserts.

### 2 year warranty

## CleanWorks OS



### Progress Bar

Displays segment progression of a running program from Home screen.

### Programs

Stores up to 200 programs. Users can simply create and store programs.

### Data Logging

View data as table or graph. Customize table view to show up to 6 data columns.

### Accessories

Enable or disable system accessories.

### Diagnostics

Access installation and troubleshooting tools. Results can be exported via USB.

### Data Export

Backup programs and data log files to USB.



# FlaskScrubber® Vantage® Laboratory Glassware Washers

## Features & Benefits



### CleanWorks™ OS

provides intuitive control of washer's cycle programs and performance data.

### HEPA-filtered drying

Particulate-free forced air quickly removes moisture.

### Steam Generator

produces hot vapor to penetrate and soften dried contaminants.

### Lower Spindle Rack included

with 36 spindles. Accommodates a variety of optional accessory inserts.

### Automatic detergent & rinse aid dispensers

Peristaltic pumps automatically draw a programmed amount of liquid detergent & rinse aid during the wash & rinse cycles.

### Powerful dual pumps

recirculate water to provide thorough cleaning and separate drain pump to reduce the potential for cross-contamination.

### CleanPoint™ Technology

Measures conductivity & bypasses unnecessary pure water rinses.

### SpeedVent™ Technology

shortens drying time by venting residual heat from the washer.

### Robust heating

Water temperature reaches 93° C to remove stubborn contaminants.

### 2 year warranty

## CleanWorks OS



### Progress Bar

Displays segment progression of a running program from Home screen.

### Programs

Stores up to 200 programs. Users can simply create and store programs.

### Data Logging

View data as table or graph. Customize table view to show up to 6 data columns.

### Accessories

Enable or disable system accessories.

### Diagnostics

Access installation and troubleshooting tools. Results can be exported via USB.

### Data Export

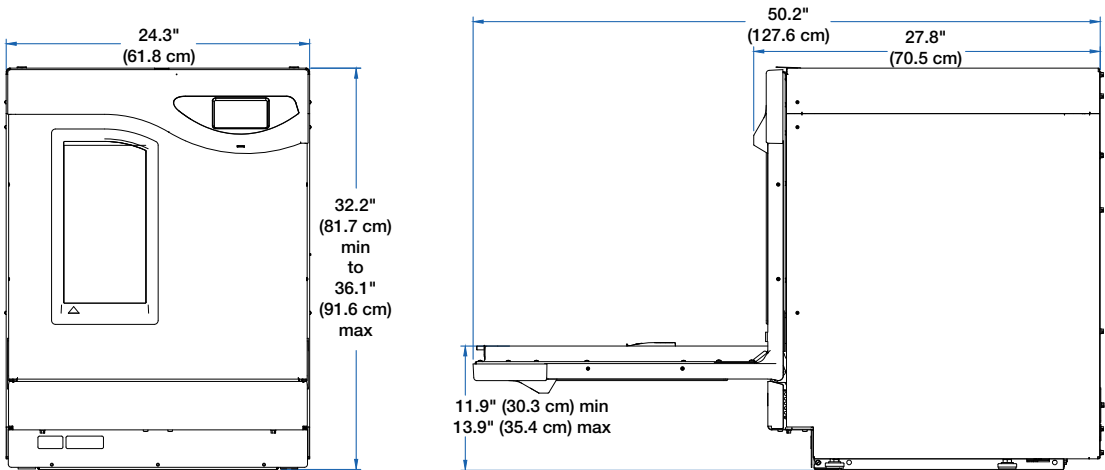
Backup programs and data log files to USB.



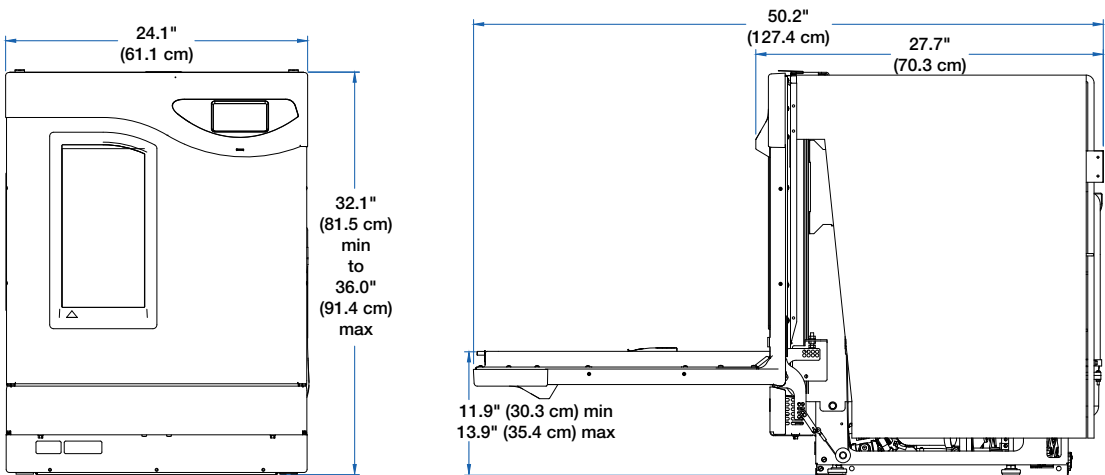
# Labconco Laboratory Glassware Washers

## Dimensional Data

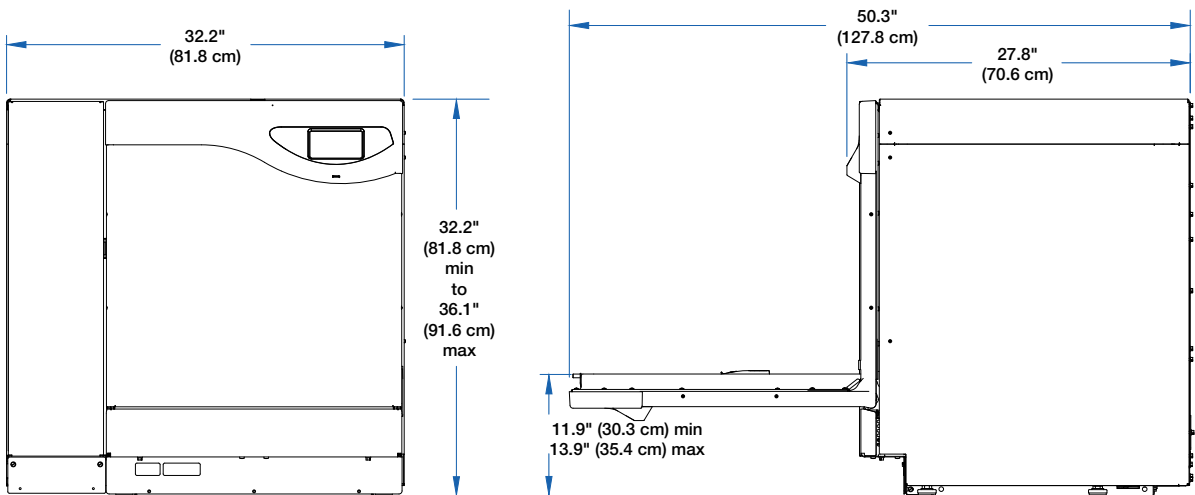
### Freestanding Models



### Undercounter Models



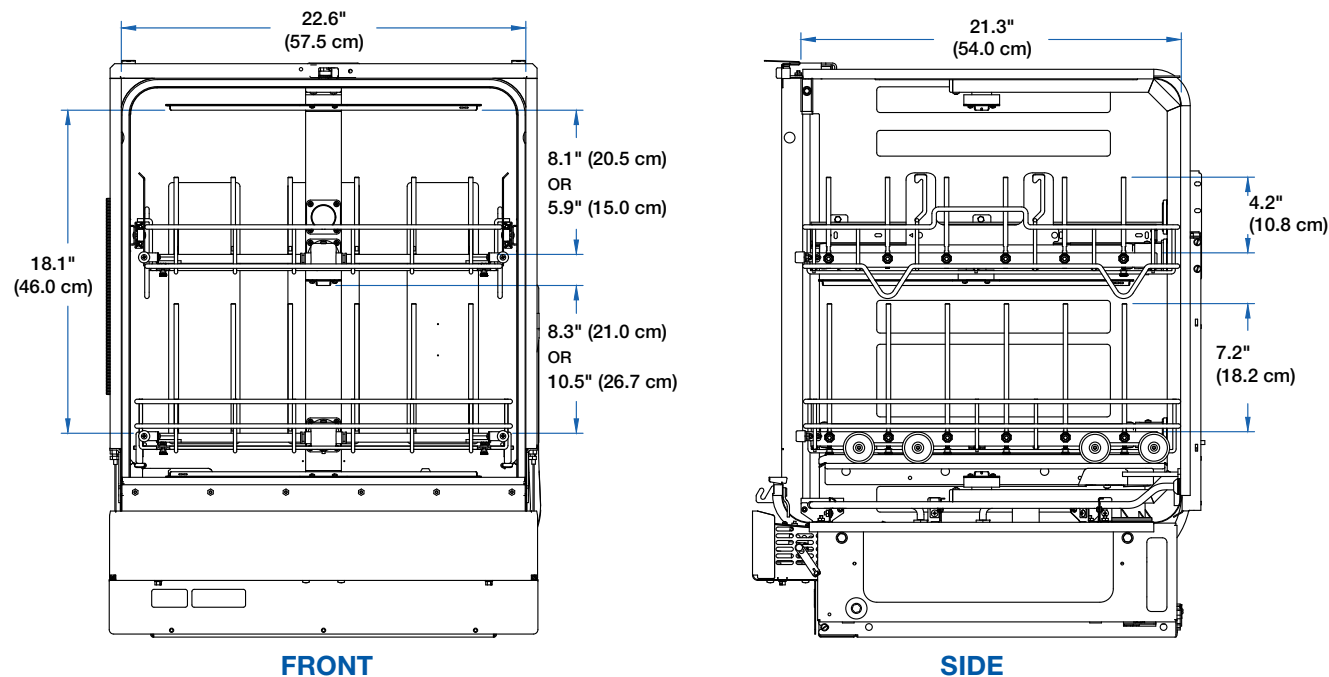
### Vantage Models



# Labconco Laboratory Glassware Washers

## Dimensional Data

### Interior Dimensions with Lower and Upper Spindle Racks (all models)



### Interior Dimensions with Lower and Upper Standard Racks (all models)

