

### GBF1704 Barrier-Free WideArea™ Eye/Face Wash, Pedestal Mounted

**Application:** Barrier-Free, free standing, pedestal mounted WideArea™ eye/face wash. Bowl is lowered and extended to permit access by wheelchair user. Profile of unit is “flattened” to comply with maximum height and knee clearance requirements.

**ADA Compliance:** Unit complies with ADA requirements for accessibility by handicapped persons (maximum height and reach, minimum knee clearance and distance from obstructions).

**Spray Head Assembly:** Four GS-Plus™ spray heads. Each head has a “flip top” dust cover, internal flow control and filter to remove impurities from the water flow.

**Valve:** 1/2" IPS chrome plated brass stay-open ball valve. Valve is US-made with chrome plated brass ball and PTFE seals.

**Bowl:** 11-1/8" diameter stainless steel.

**Pipe and Fittings:** Schedule 40 galvanized steel. Furnished with orange polyethylene pipe covers for high visibility and corrosion resistance.

**Supply:** 1/2" NPT female inlet.

**Waste:** 1-1/4" NPT female outlet.

**Sign:** ANSI-compliant identification sign.

**Quality Assurance:** Valve and spray head assemblies are factory assembled and water tested prior to shipment.

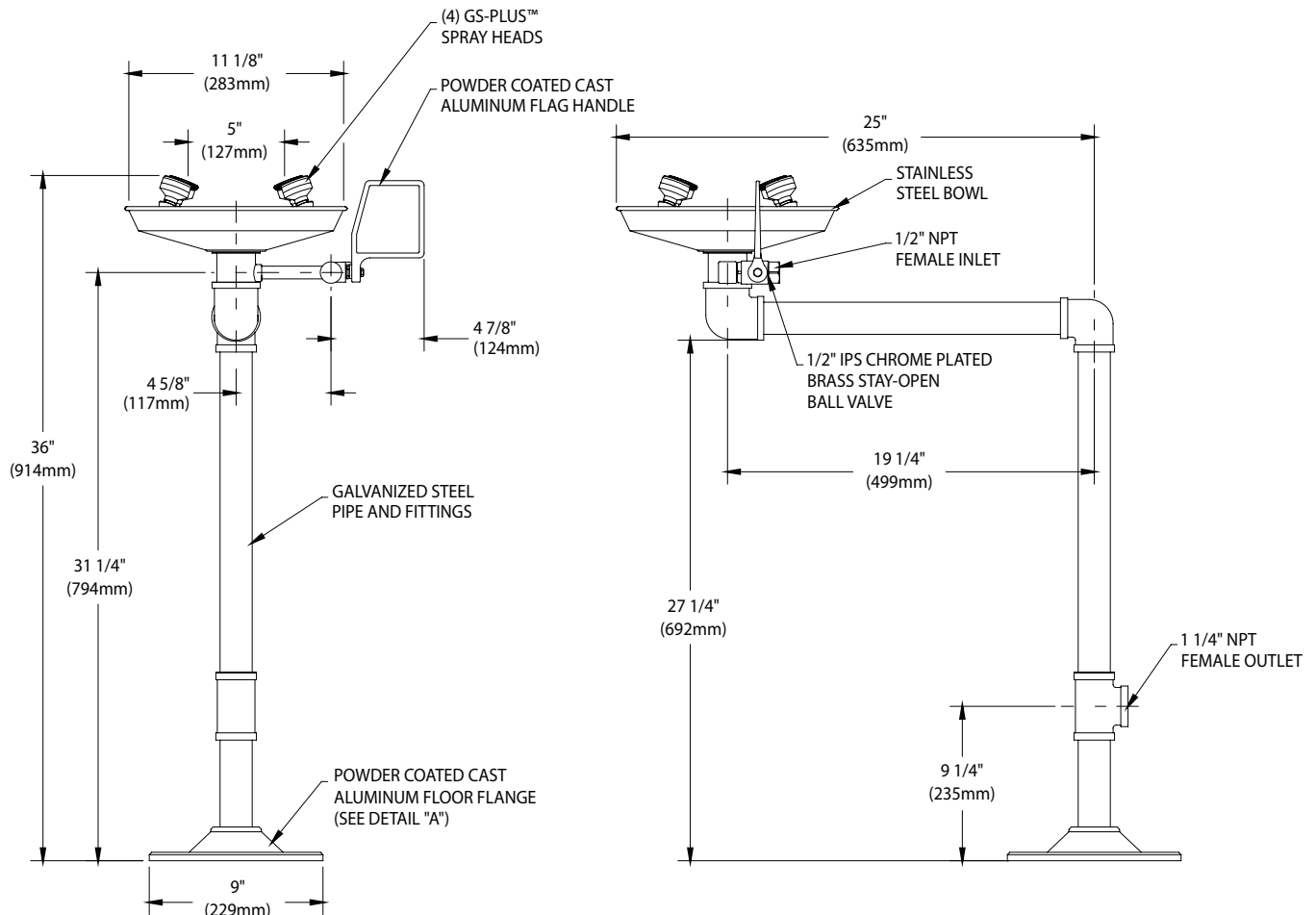
#### Available Options

- ☐ **BC** Stainless steel bowl cover. Cover protects unit against contaminants. Cover is automatically raised when unit is activated.
- ☐ **HS** Auxiliary hand-held drench hose for rinsing eyes, face or body.
- ☐ **G3600LF** Thermostatic mixing valve precisely blends hot and cold water to deliver warm (tepid) water as required by ANSI Z358.1-2014. Refer to “Tempering Valves” section for complete technical and product selection information.

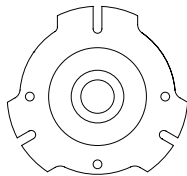




### GBF1704 Barrier-Free WideArea™ Eye/Face Wash, Pedestal Mounted



DETAIL "A"  
UNIVERSAL FLOOR FLANGE



Ø7/16" MOUNTING SLOTS  
ON 7-5/8" BOLT CIRCLE

#### NOTES:

1. EACH GS-PLUS™ SPRAY HEAD HAS A "FLIP-TOP" DUST COVER, INTERNAL FLOW CONTROL AND FILTER TO REMOVE IMPURITIES FROM THE WATER FLOW.
2. REVERSING THE TWO LOWEST PIPE NIPPLES RAISES THE DRAIN OUTLET TO 19 5/8" A.F.F.

THIS SPACE FOR ARCHITECT/ENGINEER APPROVAL

Due to continuing product improvement, the information contained in this document is subject to change without notice. All dimensions are  $\pm 1/4"$  (6mm).

Sign Included



Guardian Equipment  
1140 N North Branch St  
Chicago, IL 60642

312 447 8100 TELEPHONE  
312 447 8101 FACSIMILE  
gesafety.com

L O N G O

// ASSOCIATES INC.

6 f E Ø A f . B Ø > 6 . p | T M S X T M E E T M / f Ø > E f S /  
Ø Ø Ø | T M S X T M | . E / T M ~



Listed 8116. Units have been tested to and comply with ANSI Z358.1-2014 and the Uniform Plumbing Code.

