



L O N G O
// ASSOCIATES INC.

PROJECT GUIDE

| 50 YEARS OF EXPERIENCE

CONSULTANTS, PLANNERS & PARTNERS

| EDUCATIONAL LABORATORY EXPERTS

CHEMISTRY, BIOLOGY, GENERAL SCIENCE, PHYSICS, ROBOTICS, S.T.E.A.M.

| QUALITY FURNITURE + EQUIPMENT

CASEWORK, FUME HOODS, FIXTURES, TABLES, SEATING & STORAGE

/// MODERN LABORATORY PLANNING, PROJECTS + PRODUCTS



L O N G O
// ASSOCIATES INC.

PROJECT GUIDE

| 50 YEARS OF EXPERIENCE

CONSULTANTS, PLANNERS & PARTNERS

| EDUCATIONAL LABORATORY EXPERTS

CHEMISTRY, BIOLOGY, GENERAL SCIENCE, PHYSICS, ROBOTICS, S.T.E.A.M.

| QUALITY FURNITURE + EQUIPMENT

CASEWORK, FUME HOODS, FIXTURES, TABLES, SEATING & STORAGE

/// MODERN LABORATORY PLANNING, PROJECTS + PRODUCTS

LABORATORY PROJECT GUIDE

PROJECT GUIDE

// GUIDELINES TO KEEP IN MIND WHEN PLANNING YOUR SCIENCE LAB




1

CONSULTATION

We evaluate your existing space and design a new layout to fit your specific requirements.





Every Longo project is completed with precision, on time, and within budget. Longo's unique ability to understand client needs, combined with the experience of our highly trained staff, helps make every project a success. From project evaluation to expert installation, our project guideline below assures continuity of control and consistent customer satisfaction. Laboratory design is an exact science. Use our experience to your advantage.

2

SELECTION

Then, we guide you through the process of equipment + furniture selection.



3

APPROVAL

Next, we review + revise, if necessary, or approve the final plan for your new space.



4

INSTALLATION

Finally, we deliver, build + coordinate all trades on site to install your new lab.



PROJECTS+ PLANNING

LONGO'S LAB PLANNING EXPERTS WILL PROVIDE THE FOLLOWING

- *A SAFE, ADA CODE COMPLIANT, SCIENCE LAB WITH FLEXIBLE LAB DESIGN & PLANNING*
- *MAXIMUM STUDENT WORKSPACE AND STORAGE AVAILABILITY*
- *A MODERN ROOM DESIGN WITH OPTIMAL WORKSPACE/ CLASSROOM TRAFFIC FLOW*
- *TOP-OF-THE-LINE, MODERN EQUIPMENT & MATERIALS TO OUTFIT YOUR LAB*
- *ASSISTANCE IN SELECTING AND ORDERING THE MOST SUITABLE FURNITURE FOR YOUR NEEDS*



/// LABORATORY WORKSPACE PLANNING OF ANY SIZE, APPLICATION, OR BUDGET.

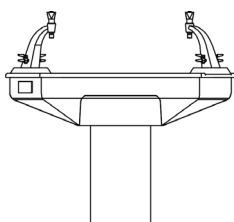
With the world's most advanced laboratory equipment and flexible design solutions, Longo Labs is able to meet the fluctuating requirements of any educational science application.

From Biology and Chemistry to Robotics and STEM, we have many sample classroom drawings available to show the various possibilities for each and every laboratory type. The following pages demonstrate the dynamic range of our laboratory planning services and products through sample layouts of multiple lab types accompanied by a variety of project images showing different variations of each student workstation.

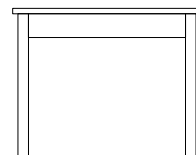
STUDENT WORKSTATION OPTIONS



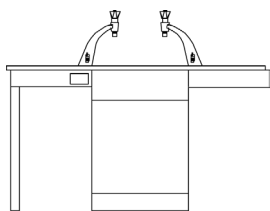
AXIS WORKSTATIONS



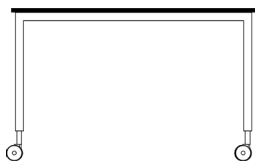
TEII WORK CENTERS



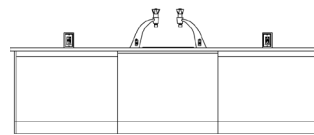
WOOD BASE TABLES



PIER TABLES



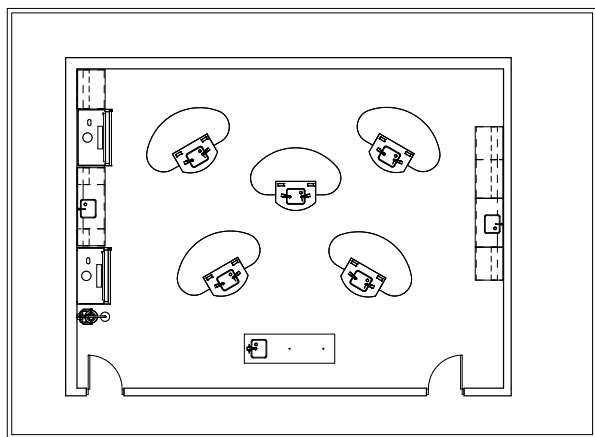
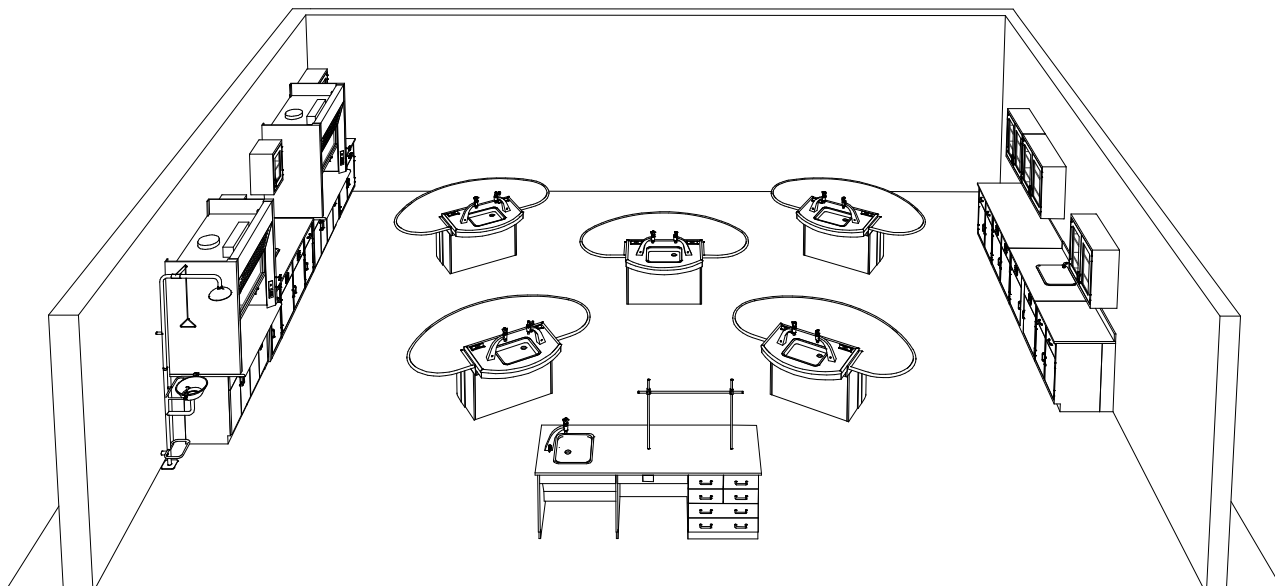
METAL BASE TABLES



BENCHES

PLANNING

AXIS WORKSTATIONS



APPLICATIONS

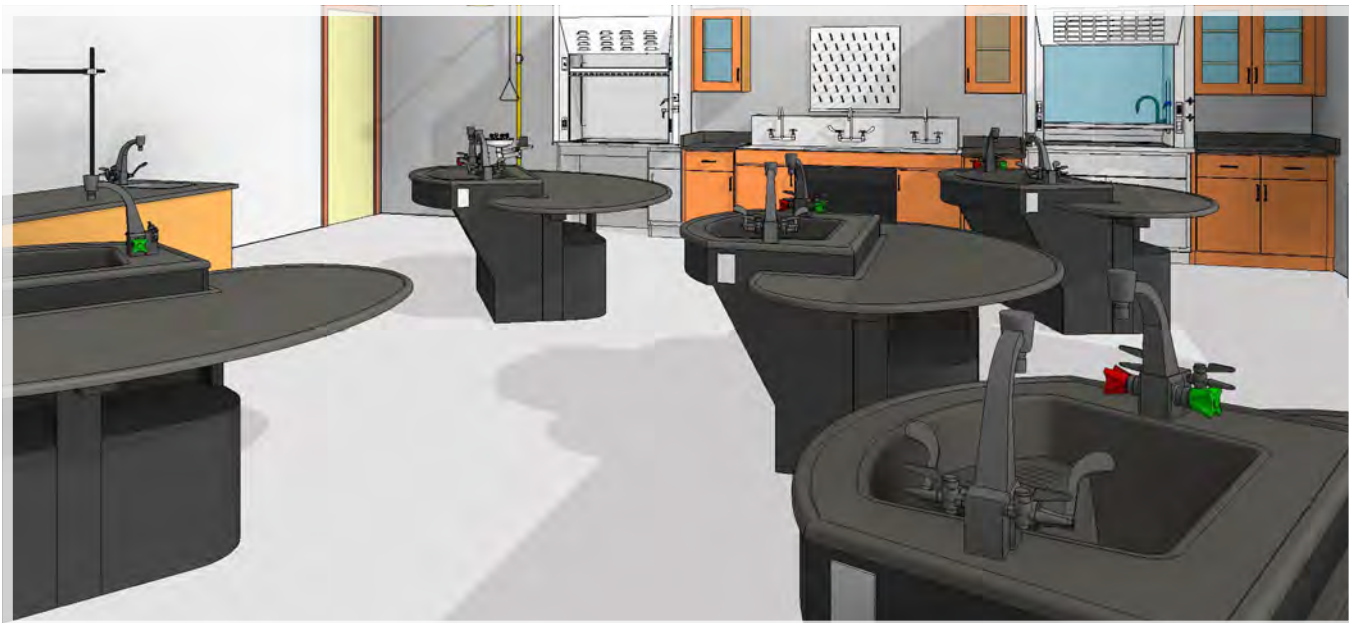
CHEMISTRY / BIOLOGY / S.T.E.M.

FURNITURE LIST

Axis Workstations / Teacher Demonstration Desk / Wall Mounted
Drying Rack / Stainless Utility Sink / Eyewash-Safety Shower / Wood
Casework / Air Foil Fume Hoods

AXIS WORKSTATION FEATURES

8' WORK SURFACE
HEIGHT ADJUSTABLE - 30" TO 36"
PLUMBING, ELECTRIC & DATA SUPPLY CAPABLE
FEDERAL ADA GUIDELINE COMPLIANT FOR ACCESSIBILITY
19-1/2 GALLON CANTILEVERED SINK OPTIONAL
UP TO 12 ELECTRICAL OUTLETS AND DATA PORTS
VANDAL-RESISTANT UNICAST FIXTURES // CW/HW/G
EPOXY RESIN WORKTOP WITH A MARINE EDGE



SHOWN *FIXED AXIS W/ SINK*

ADDITIONAL PRODUCTS *page 32*

WOOD CASEWORK

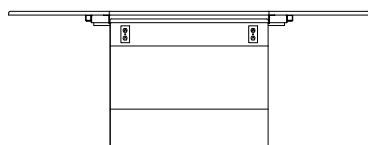
STANDARD DEMONSTRATION DESK

TALL STORAGE CABINET

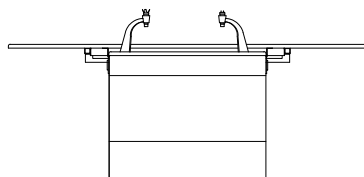
AIR FOIL FUME HOODS



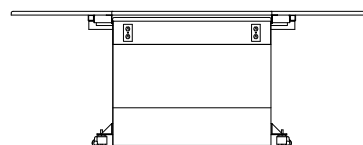
AXIS WORKSTATION OPTIONS



FIXED



FIXED + SINK



MOBILE

PROJECTS

AXIS WORKSTATIONS

When it comes to versatility and functionality, the Axis series has no equal. With a quiet remote-controlled lifting mechanism, the Axis table quickly adjusts from a seated lecture height of 30", to a standing lab height of 36". It's a great option for all disciplines including Chemistry, Biology, General Science, Physics, & Robotics. This workstation has a durable, epoxy resin work surface with a marine edge to control spills and an optional 19-1/2 gallon cantilevered sink. Available fixed or mobile, with up to 12 electric and data ports and is Federal ADA guideline compliant for accessibility.



AXIS

| SHOWN ABOVE FIXED BASED AXIS WORKSTATIONS W/ SINK

/// SAMPLE INSTALLATIONS

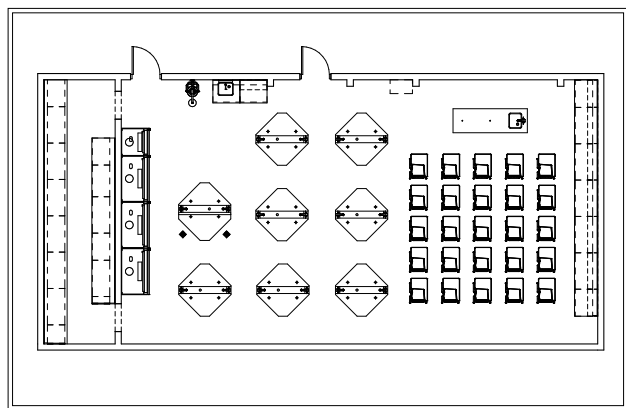
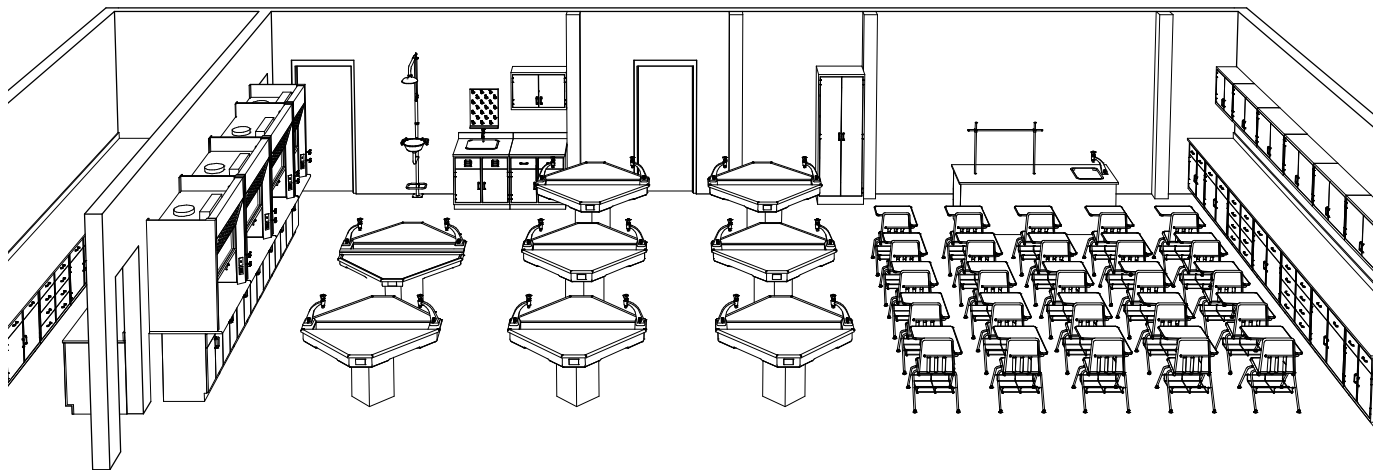


SHOWN BELOW *FIXED AND MOBILE BASE AXIS / UTILITY SINK / SEATING / TEACHERS DEMO DESK / WOOD CABINETS*



PLANNING

TEII WORK CENTERS



APPLICATIONS

CHEMISTRY / BIOLOGY / S.T.E.M.

FURNITURE LIST

TEII Work Centers / Demonstration Desk / Wall Mounted

Drying Rack / Perimeter Sink / Eyewash-Safety Shower / Wood

Casework / Fume Hoods

TEII WORK CENTER FEATURES

FIRE-RETARDANT UNDERSTRUCTURE

10-GAUGE STEEL SUPPORT PEDESTAL

MARINE EDGE TOP TO CONTROL SPILLS

DRAWER, CUPBOARD OR COMBINATION UNDER STORAGE

VANDAL-RESISTANT UNICAST FIXTURES // CW/G

RAISED TURRETS FOR TALL BEAKERS OR SUPPLIES

ELECTRICAL OPTIONS AVAILABLE



SHOWN *SPLIT TOP TEII W/ FULL TROUGH*

ADDITIONAL PRODUCTS *page 32*

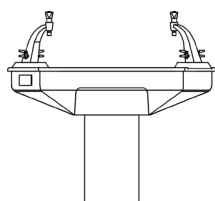
CASEWORK

DEMONSTRATION DESK

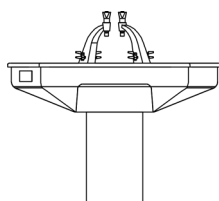
TALL STORAGE CABINET

FUME HOODS

TEII WORK CENTER OPTIONS



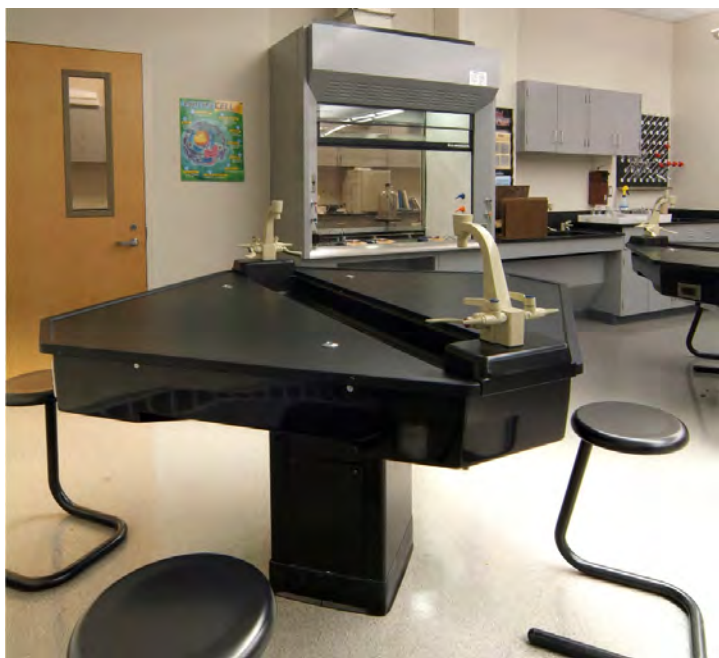
SPLIT TOP/ FULL TROUGH



FLAT TOP/ CENTER SINK

PROJECTS

TEII WORK CENTERS





SHOWN OPPOSITE TEII W/ FULL TROUGH SINK // COMBINATION STORAGE SHOWN

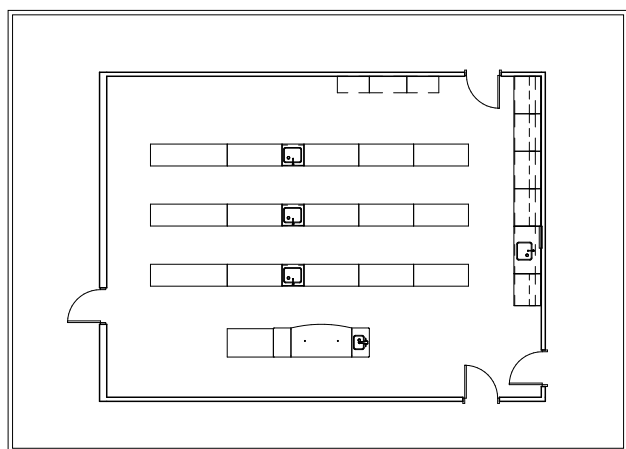
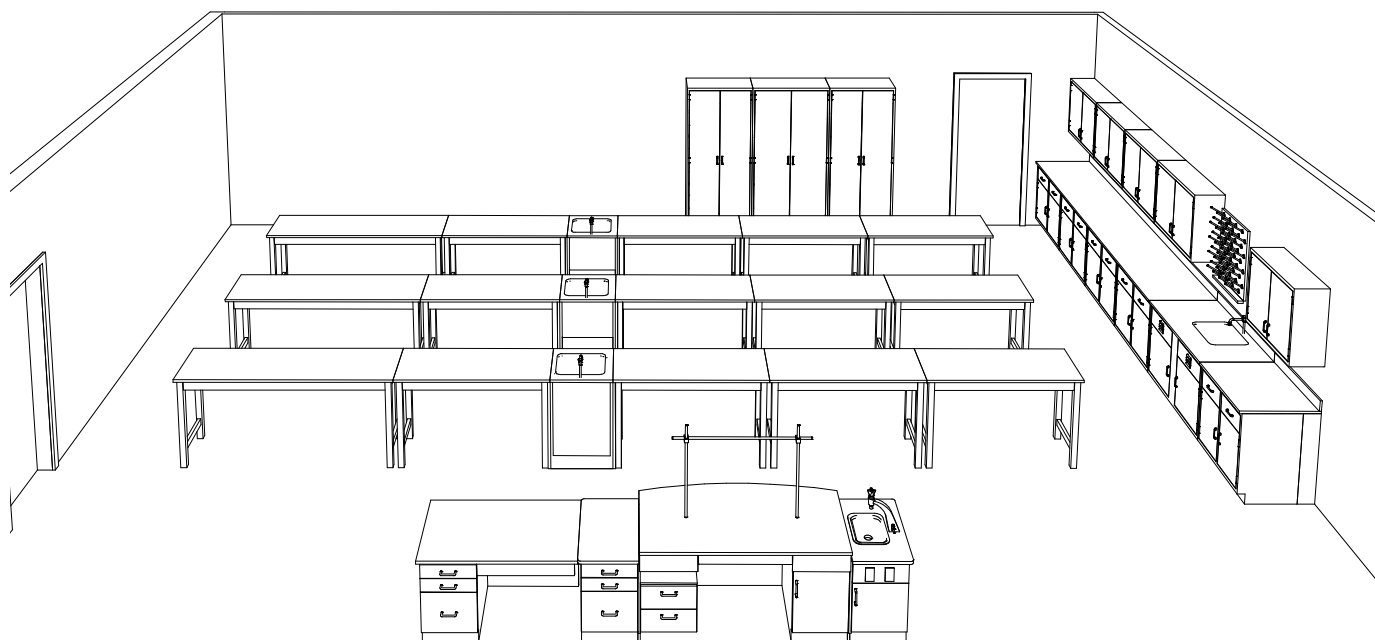
Ideal for the tightest of spaces, the TEII provides maximum counter space, increased standing room and safety. The TEII workstation is designed to allow for unobstructed traffic lanes in every direction, which assures each student a safe work area. The unique shape of this workstation prevents students from having to work back-to-back and provides increased front counter space and more elbow room. Students are able to collaborate more easily with anyone sitting across from or next to them because other workers and activities are within his or her angle of vision. The TEII workstation is also height adjustable upon installation and available in several different finishes and styles depending upon its intended use.

TEII

| SHOWN ABOVE TEII W/O TROUGH

PLANNING

WOOD BASE TABLES



APPLICATIONS

CHEMISTRY / BIOLOGY

FURNITURE LIST

Wood Base Tables / Demonstration Desk / Wall Mounted
Drying Rack / Perimeter Sink / Wood Casework

WOOD BASE TABLE FEATURES

SOLID WOOD FRAME CONSTRUCTION
CHEMICAL RESISTANT, UV FINISH
WORK SURFACE IN EPOXY OR PHENOLIC RESIN
AVAILABLE IN 5+ FINISHES
METAL WIRE PULLS STANDARD
PROTECTIVE RUBBER BOOTS



SHOWN *FIXED WOOD BASE TABLES*

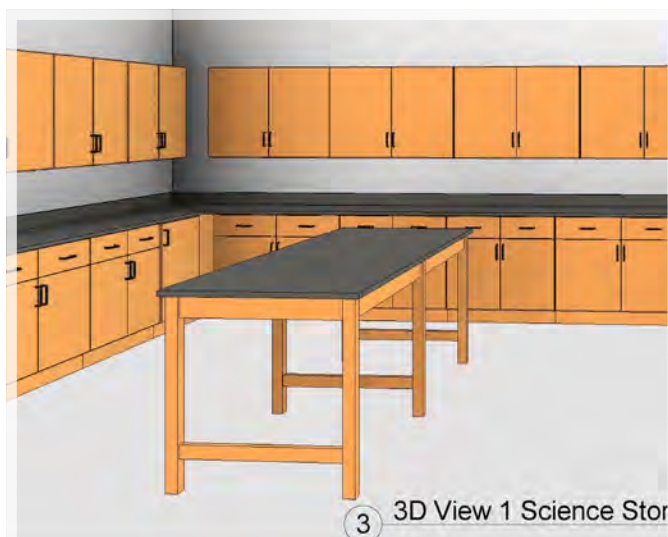
ADDITIONAL PRODUCTS *page 32*

CASEWORK

DEMONSTRATION DESK

PERIMETER CABINETS

TALL STORAGE



3 3D View 1 Science Storage

WOOD BASE TABLE OPTIONS



FIXED



MOBILE

PROJECTS

WOOD BASE TABLES

Wood Base Tables are a durable furniture option for a variety of educational applications. The apron is made of solid wood and attached using heavy-duty 13-gauge steel corner braces. Equipped with non-skid, adjustable glides for precise leveling on uneven floors and black rubber leg boots to protect against scuffing and chemical spills. Table top options are epoxy resin, phenolic resin and plastic laminate. Coordinating accessories such as reagent shelving and under-bench storage are available and should be selected based on your specific laboratory requirements.

WOOD BASE

| SHOWN ABOVE 2-STUDENT, WOOD BASE TABLES

/// SAMPLE INSTALLATIONS

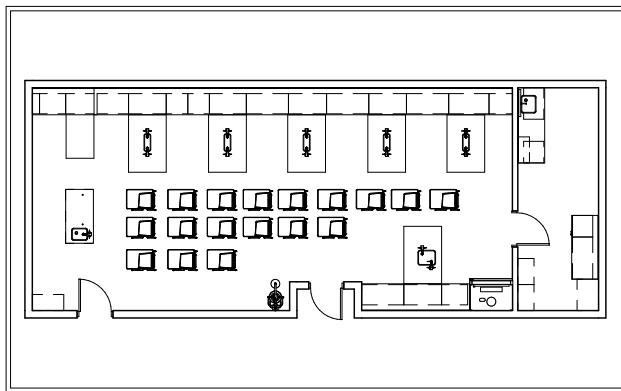
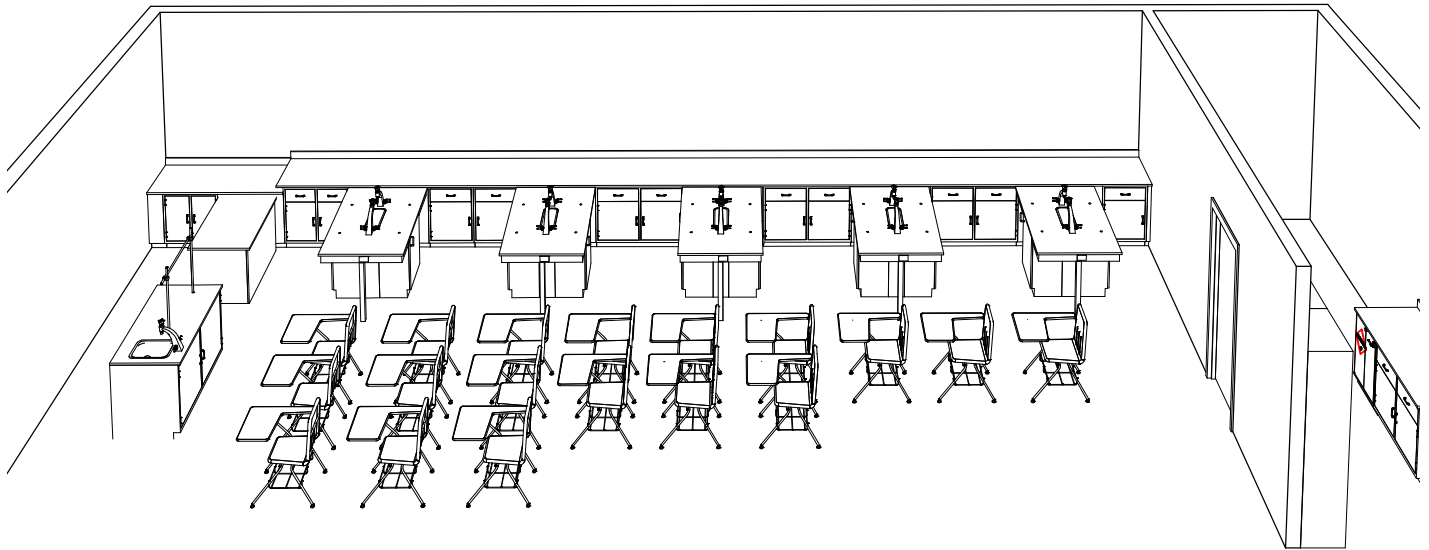


SHOWN BELOW 2-STUDENT, WOOD BASE TABLES // SHOWN WITH AND WITHOUT CASTERS



PLANNING

PIER TABLES



APPLICATIONS

BIOLOGY / CHEMISTRY / GENERAL SCIENCE / PHYSICS

FURNITURE LIST

Pier Tables / Demonstration Desk / Wall Mounted Drying Rack
/ Perimeter Sink / Wood Casework

PIER TABLE FEATURES

SOLID WOOD FRAME CONSTRUCTION

CHEMICAL RESISTANT, UV FINISH

WORK SURFACE IN EPOXY OR PHENOLIC RESIN

AVAILABLE IN 5+ FINISHES

METAL WIRE PULLS STANDARD

OPTIONAL CENTER SINK



on A - Pier Tables



SHOWN PIER TABLES W/ CENTER SINK

ADDITIONAL PRODUCTS page 32

CASEWORK

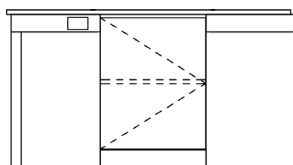
DEMONSTRATION DESK

PERIMETER CABINETS

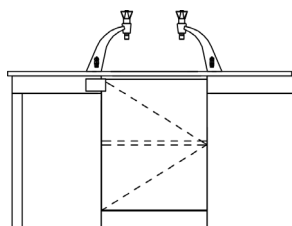
TALL STORAGE



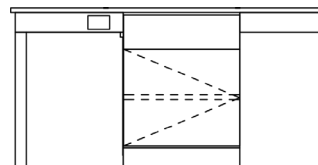
PIER TABLE OPTIONS



W/O SERVICES



W/ SERVICES



ADA W/O SERVICES

PROJECTS

PIER TABLES

Pier Tables are a great furniture choice for most educational science environments. This style laboratory table provides easy access to services as well as an abundant amount of counter space for each individual student. Pier tables are commonly configured in one of two ways; a traditional perimeter layout or centrally clustered and positioned to accommodate the working requirements that a particular class demands. Additionally, these lab tables can be customized with select drawer and cupboard configurations to create an even more effective and organized work center.

PIER

| SHOWN ABOVE PIER TABLE W/ CENTER SINK

/// SAMPLE INSTALLATIONS

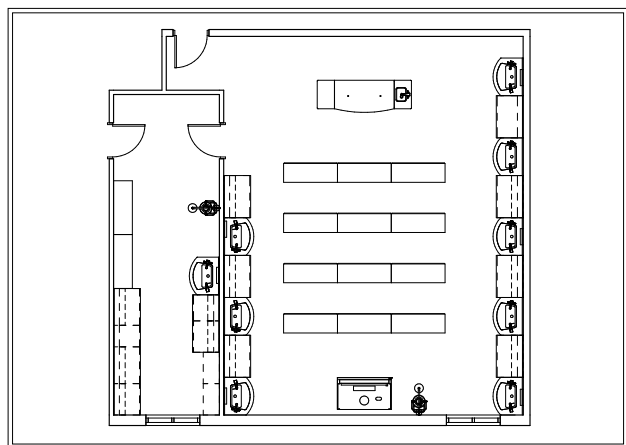
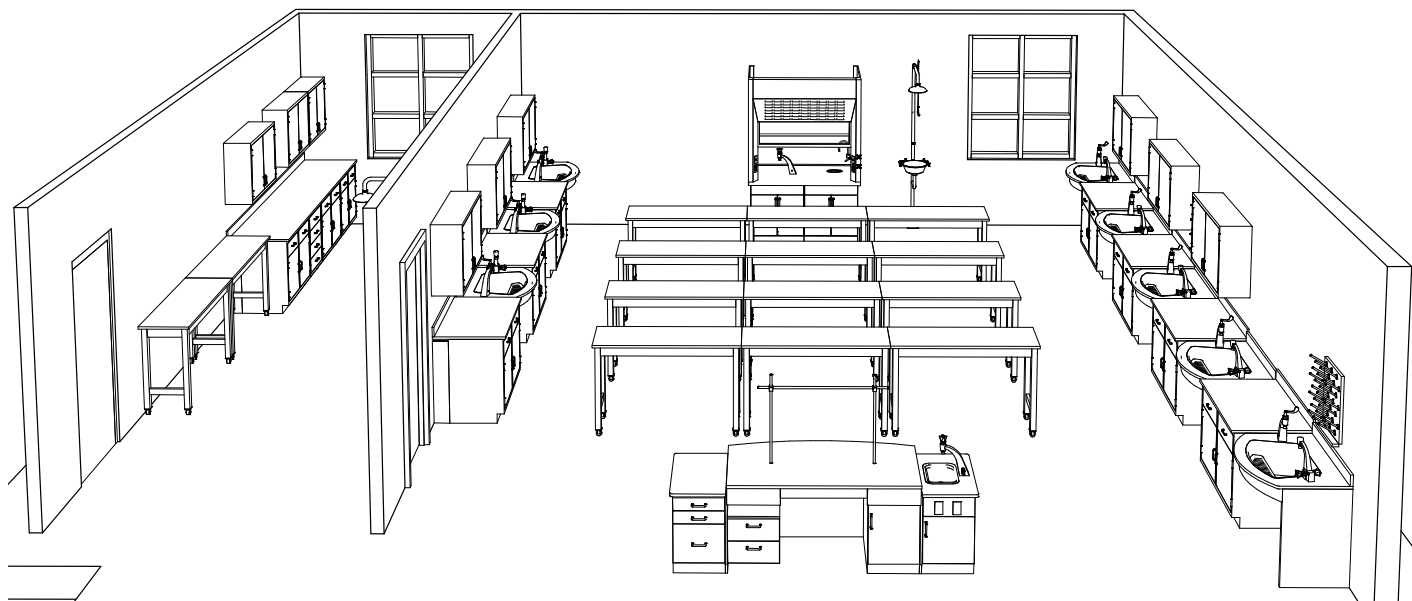


SHOWN BELOW PIER TABLES W/ AND W/O CENTER SINK // PERIMETER SINKS ALSO SHOWN



PLANNING

METAL BASE TABLES



APPLICATIONS

**BIOLOGY / CHEMISTRY / GENERAL SCIENCE / PHYSICS /
ROBOTICS / S.T.E.M**

FURNITURE LIST

Metal Base Tables / Demonstration Desk / Wall Mounted
Drying Rack / Perimeter Sinks / Metal Casework

METAL BASE TABLE FEATURES

16" OR 18" GAUGE STEEL FRAME CONSTRUCTION
WORK SURFACE IN EPOXY OR PHENOLIC RESIN
POWDER COATED STEEL FINISH FRAME
CASTERS / ADJUSTABLE HEIGHT LEGS OPTIONAL
METAL WIRE PULLS STANDARD ON STORAGE



SHOWN MOBILE METAL BASE TABLES

ADDITIONAL PRODUCTS page 32

CASEWORK

DEMONSTRATION DESK

PERIMETER CABINETS

FUME HOODS



METAL BASE TABLE OPTIONS



FIXED



MOBILE

PROJECTS

METAL BASE TABLES





SHOWN OPPOSITE METAL BASE, MOBILE TABLES // SERVICES FROM CENTER SERVICE SPINE SHOWN

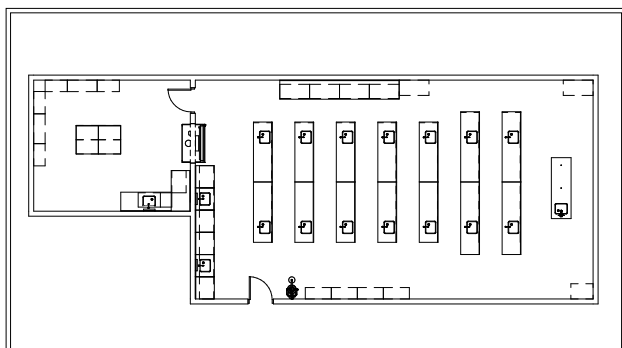
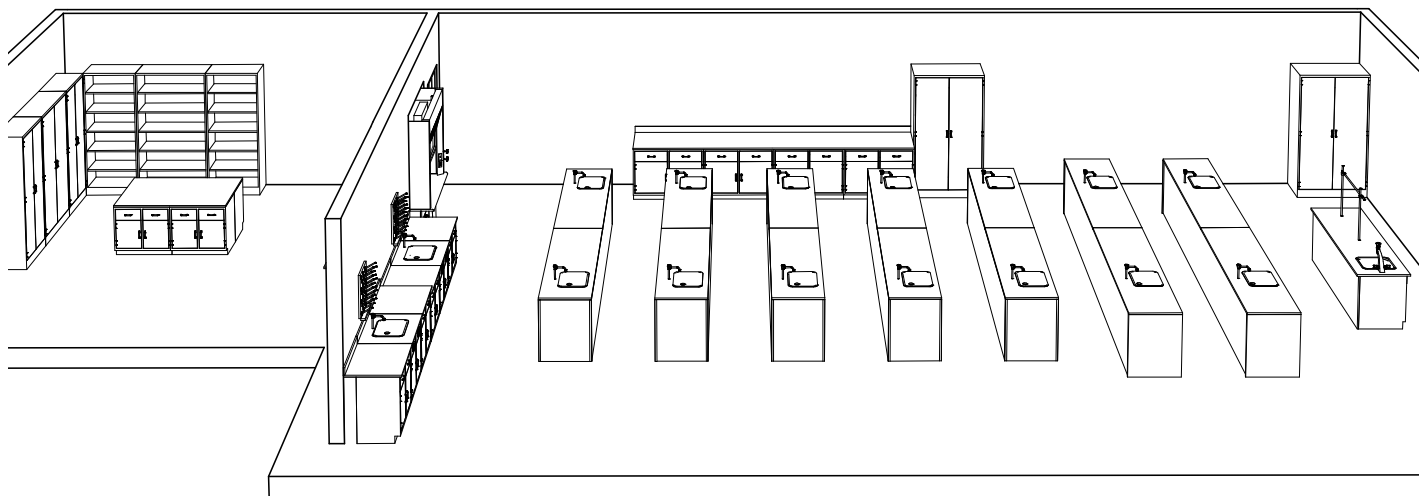
Flexibly designed to meet the unique requirements of the modern lab, our Metal Base Table system has the versatility to accommodate all disciplines. The dynamic, height adjustable, Metal Base Table, is durably constructed with industrial grade, heavily welded steel. The flexible design of the table allows it to adapt to the changing needs of multiple students. Available with a phenolic resin or plastic laminate work surface; both worktops are available in a variety of colors. Variable service supply modules for the integration of all services, from hot & cold water to gas, electricity and data supply lines are also available for this unit.

METAL BASE

| **SHOWN ABOVE** METAL BASE TABLE SYSTEM W/ MOBILE UNDER STORAGE

PLANNING

BENCHES



APPLICATIONS

BIOLOGY / CHEMISTRY / GENERAL SCIENCE / PHYSICS

FURNITURE LIST

Benches / Demonstration Desk / Wall Mounted Drying Rack /
Perimeter Sinks / Wood Casework / Tall Storage

BENCH FEATURES

SOLID WOOD CONSTRUCTION

AVAILABLE IN 5+ FINISHES

CHEMICAL RESISTANT, UV FINISH

WORK SURFACE IN EPOXY OR PHENOLIC RESIN

METAL WIRE PULLS STANDARD

OPTIONAL CENTER SINK(S)

DRAWER, CABINET OR COMBINATION UNDER STORAGE



SHOWN BENCHES W/ ACCESS TO SERVICES

ADDITIONAL PRODUCTS page 32

CASEWORK

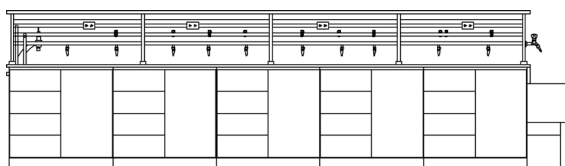
DEMONSTRATION DESKS

PERIMETER CABINETS

TALL STORAGE



BENCH STORAGE OPTIONS



REAGENT RACKS W/ UNDER STORAGE



DRAWER + CABINET



CABINET

PROJECTS

BENCHES

Traditional laboratory benches are designed to accommodate eight to twelve students, making them large enough to provide storage facilities at each individual lab station. We offer a full range of equipment storage with modular under-bench storage options including cabinets, drawers or a combination of both. Our wood benches are constructed from solid wood, which means they're built to last, making them the ideal choice for high-use, educational science lab settings. Wood has remained the traditional cabinet choice of educational science facilities for decades, simply because of its durable nature. Bench tops come in a variety of colors, in both, phenolic resin or plastic laminate finish. Access to hot & cold water, gas, electricity and data supply lines is available.

BENCHES

| SHOWN ABOVE BENCH W/ CENTER SINKS, STORAGE AND ACCESS TO SERVICES // GAS, H/W, C/W AND ELECTRIC

/// SAMPLE INSTALLATIONS



SHOWN BELOW BENCHES W/ END SINKS, CENTER SINKS, DRAWER + CABINET STORAGE AND ACCESS TO SERVICES



PRODUCTS

Over the last 50 years, Longo has developed relationships with the nation's most respected manufacturers of lab furniture and equipment. As a result,

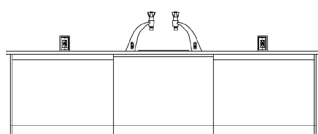
we offer many unique and diverse product lines, giving you the best possible solution for every laboratory application. Our educational labspaces are designed to provide cutting-edge flexibility, versatility, and efficiency for students of all ages, from grades K-12, to college, and university.

Here's a partial look at the versatile range of laboratory products available through Longo.

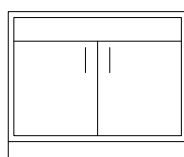


/// LABORATORY PRODUCTS FOR ALL MARKETS,
ANY SIZE ROOM, AND EVERY BUDGET.

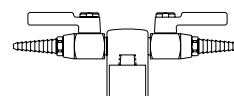
MODERN EDUCATIONAL SCIENCE FURNITURE



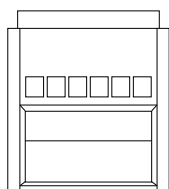
BENCHES



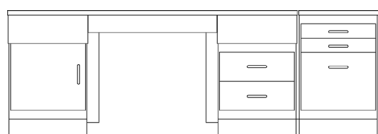
CASEWORK



FIXTURES



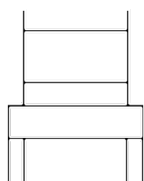
FUME HOODS



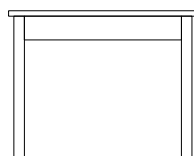
INSTRUCTOR DESKS



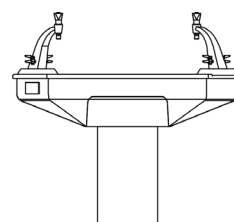
MOBILE SYSTEMS



SEATING



TABLES



WORKSTATIONS

PRODUCTS



From furniture to fume hoods, Longo offers the most comprehensive selection of high quality laboratory furniture and equipment available in the industry. Our product breadth includes adaptable workstations, modular casework, countertops, high-efficiency fume hoods, fixtures, ergonomic seating, and much more. Longo also offers **contract pricing**, which translates as, "**big savings**" for you. All of our products and services can be purchased through our affiliate purchasing cooperative, allowing us to skip the extensive bid process and you to avoid having to pay additional third-party fees.



/// FROM FURNITURE TO FUME HOODS, ONLY THE
HIGHEST QUALITY LABORATORY PRODUCTS.



BENCHES

CASEWORK

PLASTIC LAMINATE, METAL + WOOD

FUME HOODS

CHEMISTRY, WALK-IN + SAFETY CABINETS

FIXTURES

DATA, ELECTRICAL, GAS + PLUMBING

INSTRUCTOR DESKS

MOBILE SYSTEMS

TABLES

WOOD + METAL BASE

WORKSTATIONS

LAB TO LECTURE FLEXIBILITY

WORK SURFACES

EPOXY RESIN, PHENOLIC, PLASTIC
LAMINATE + STAINLESS STEEL

EXHAUST COMPONENTS

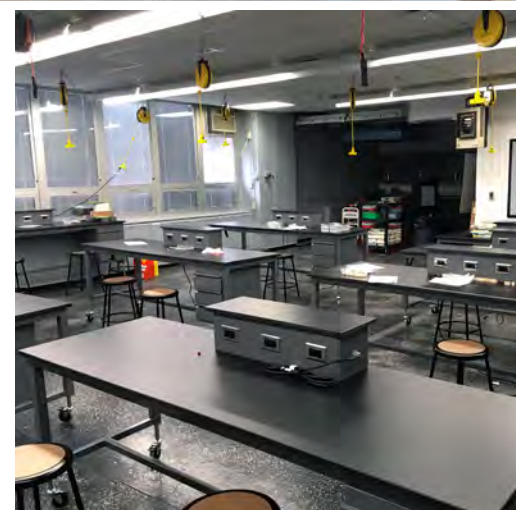
EXHAUST FANS, DUCTING, SCRUBBERS,
FILTERS, VAV + ALARM SYSTEMS

ACCESSORIES

SINKS, DRAIN SYSTEMS + DRYING/
REAGENT RACKS

SEATING

STOOLS + CHAIRS



PRODUCTS

WORKSTATIONS / BENCHES / TABLES / DESKS



Longo's multi-disciplinary workspace solutions are the first choice of today's educators. Our state-of-the-art laboratory facilities are specifically designed to accommodate teachers and students. We create comfortable, functional, and conducive learning environments where educators are not limited by their furniture or equipment, so they can focus on what's important to them... *teaching*.



BENCHES



COUNTER SPACE FOR WORKING

WOOD OR METAL CASEWORK / OPTIONAL
END SINK + GFI OUTLET(S).

INSTRUCTOR DESKS



DEMONSTRATIONS

FIXED OR MOBILE DEMO DESK WITH
OPTIONAL END SINK.

/// DUAL PURPOSE LABSPACE SYSTEMS THAT CONVERT FROM LECTURE TO LAB MODE EFFORTLESSLY AND INSTANTLY.



AXIS WORKSTATIONS



HEIGHT ADJUSTABLE

FIXED OR MOBILE BASE / QUICK CONNECT SERVICES TO CEILING / OPTIONAL SINK.



TEII WORK CENTERS



SPACE SAVER

OPTIONAL FULL OR SPLIT TROUGH SINK / DRAWER, CABINET OR COMBINATION UNDERSTORAGE.



TABLES



MULTI-PURPOSE

WOOD OR METAL BASE / OPTIONAL CASTERS / PRIVACY PANELS CLIP ON FOR TESTING.

PRODUCTS

BASE CABINETS / WALL CASES / TALL STORAGE

METAL



HEAVY DUTY / FIRE RESISTANT

16 OR 18" GAUGE STEEL / POWDER COATED
STEEL FINISH / 16+ COLORS AVAILABLE.

WOOD



DURABLE / BUILT TO LAST

SOLID WOOD CONSTRUCTION / CHEMICAL
RESISTANT FINISH / 5+ FINISHES AVAILABLE.

PLASTIC LAMINATE

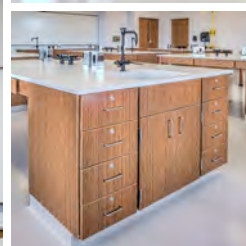


LIGHTWEIGHT / FLEXIBLE

3MM EDGE FOR IMPACT RESISTANCE / HIGH
QUALITY FINISH / 250+ COLORS AVAILABLE.



/// MADE WITH HIGH QUALITY MANUFACTURING TECHNIQUES
+ MATERIALS FOR MANY YEARS OF LASTING VALUE.



ELECTRICAL / GAS
FIXTURES

BENCHES W/ CENTER
OR END SINKS

STANDARD WIRE
PULLS ON DRAWERS
AND CABINETS

CASEWORK

| SHOWN ABOVE PERIMETER CASEWORK // TALL STORAGE CABINETS / BENCHES W/ CENTER SINKS, SERVICES,
AND LOWER DOOR + DRAWER BASE CABINETS / SAFETY EYE WASH / GOOSENECK FAUCETS

PRODUCTS

FUME HOODS / FIXTURES / SINK STATIONS



FUME HOODS



MAXIMUM SAFETY

STEEL OR WOOD BASE CABINETS / STANDARD
WORK SURFACE IN BLACK EPOXY RESIN

FIXTURES

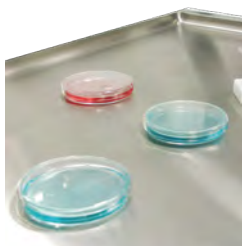


GOOSENECK FAUCETS

POLISHED CHROME FINISH / PURE TIN INTERIOR
LINING / BAKED EPOXY UPPER ASSEMBLIES

/// FLEXIBLE PRODUCT OFFERINGS, TO TRANSFORM ANY ROOM INTO A MODERN, INSPIRATIONAL, SCIENCE LABORATORY.

| SHOWN OPPOSITE WOOD CASEWORK / AIR FOIL FUME HOOD / WOOD BASE TABLES / UTILITY SINK / PEGBOARDS



PHENOLIC, EPOXY RESIN, AND STAINLESS STEEL WORK SURFACES

HOT + COLD WATER FIXTURES WITH POLISHED CHROME FINISH

UTILITY SINK



FASTER CLEAN UP

STAINLESS STEEL BASIN / MULTI-USER CLEAN UP STATION W/ STORAGE

LABORATORY PROJECT GUIDE

/// NOTES



CONTACT US



info@longoinc.com



800.635.6646

VISIT US ONLINE



www.longolabs.com

TO SEE OUR FULL RANGE OF LABORATORY PRODUCTS or LEARN MORE ABOUT OUR QUICKSHIP PROGRAM CALL or VISIT US ONLINE.
ALL PRODUCTS + SERVICES ARE AVAILABLE FOR PURCHASE THROUGH THE FOLLOWING PURCHASING COOPERATIVES.

