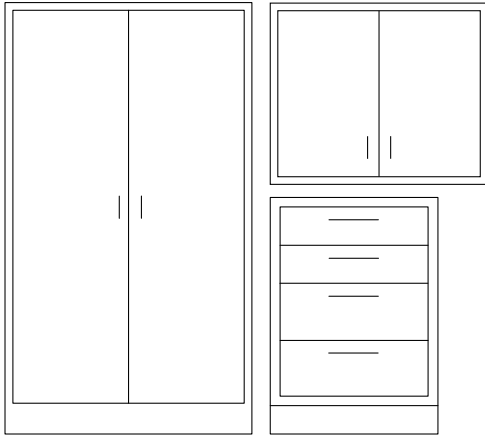


CASEWORK

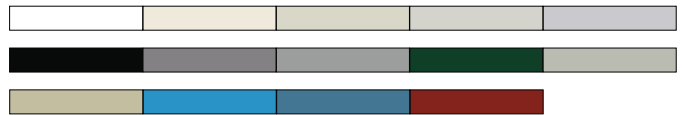
// BASE CABINETS / WALL CASES / TALL STORAGE



FEATURES

- + Solid oak, heavy steel or plastic laminate construction
- + Epoxy or phenolic resin worktop
- + Standard without locks
- + Shelves adjustable in half-inch increments
- + All cabinets include cutout for service access
- + Full extension drawer slides
- + Horizontal or vertical metal wire pulls
- + Five-knuckle hinges standard

METAL COLORS



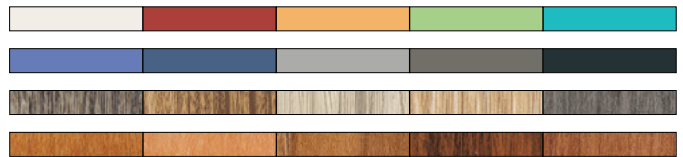
PETAL WHITE | LIGHT ALMOND | CHAMPAGNE | OFF WHITE | MODEL GRAY
BLACK | BANKER'S GRAY | PEWTER | HUNTER GREEN | STONE GRAY
FAWN BEIGE | MEDIUM BLUE | WEDGEWOOD BLUE | BURGUNDY

WOOD FINISHES



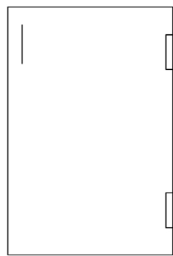
NATURAL OAK | CINNAMON TOAST | FALL HARVEST | GINGER | NORTHERN OAK

PLASTIC LAMINATE COLORS

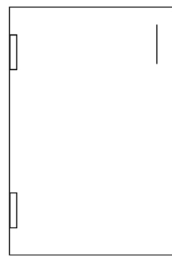


WALLABY | PORT | ORANGE GROVE | ISLAND | OCEAN
LAPIS BLUE | ATLANTIS | NORTH SEA | SLATE GREY | BLACK
CARTER OAK | ZEBRA WOOD | LIGHT OAK PLY | NATURAL RIFT | PORTICO TEAK
HUNTINGTON MAPLE | NATURAL PEAR | NEPAL TEAK | RIO | WILD CHERRY

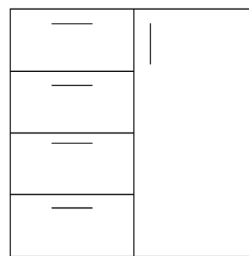
CONFIGURATIONS



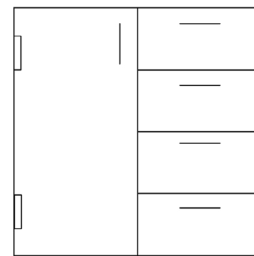
RH RIGHT-HINGED



LH LEFT-HINGED



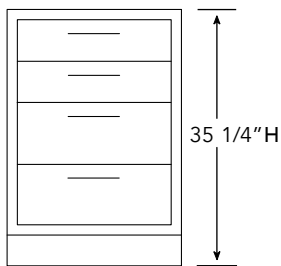
RC RIGHT CABINET



LC LEFT CABINET

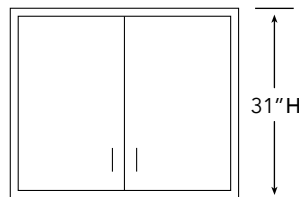
DIMENSIONS

BASE CABINETS



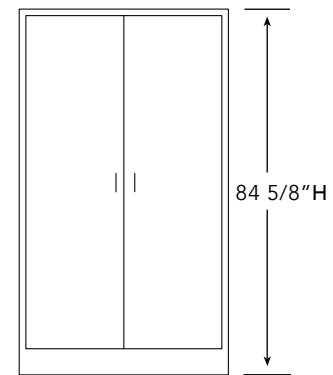
D 21 5/8" // W 18" / 24 / 36 / 48

WALL CASES



D 13" // W 36" / 48

TALL STORAGE



D 22" // W 36" / 48

DETAILS



+ CORROSION RESISTANT, POWDER COATED FINISH



+ CHEMICAL RESISTANT, UV FINISH



+ 3MM IMPACT RESISTANT EDGE