

AXIS WORKSTATION

// STUDENT WORKSTATIONS



// THE AXIS LAB TABLE COMBINES LAB AND LECTURE INTO A SINGLE, DYNAMIC LEARNING CENTER. THIS GROUNDBREAKING, MULTI-FUNCTIONAL, MULTI-LEVEL TABLE CAN BE USED FOR ALL DISCIPLINES INCLUDING CHEMISTRY, BIOLOGY, GENERAL SCIENCE, PHYSICS, ROBOTICS & MORE!

APPLICATIONS

CHEMISTRY / BIOLOGY / S.T.E.M.

FEATURES

8' WORK SURFACE

HEIGHT ADJUSTABLE - 30" TO 36"

PLUMBING, ELECTRIC & DATA SUPPLY CAPABLE

FEDERAL ADA GUIDELINE COMPLIANT FOR ACCESSIBILITY

19-1/2 GALLON CANTILEVERED SINK OPTIONAL

UP TO 12 ELECTRICAL OUTLETS AND DATA PORTS

VANDAL-RESISTANT UNICAST FIXTURES // CW/HW/G

EPOXY RESIN WORKTOP WITH A MARINE EDGE

FINISHES

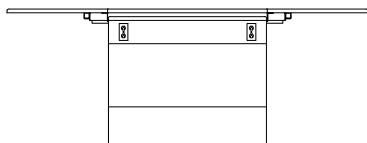
STEEL BASE



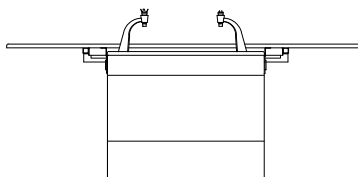
WORK SURFACE



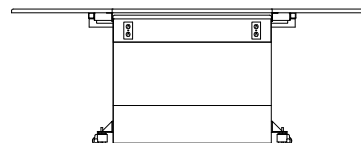
WORKSTATION OPTIONS



FIXED

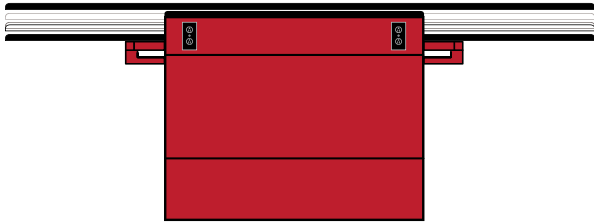


FIXED W/ SINK



MOBILE

FIXED AXIS TABLE



// AVAILABLE W/ PRIVACY PANELS



MOBILE AXIS TABLE



PRODUCT NUMBER	WORK SURFACE	WORKTOP	HEIGHT CONTROL	SINK	STUDENT CAPACITY	SINK BASE
26000	EPOXY	50" x 96"	30 - 36"H	YES	4-6	STEEL
26000	EPOXY	44" x 84"	30 - 36"H	YES	4	STEEL
26020	EPOXY	50" x 96"	30 - 36"H	NO	4-6	STEEL
26220	EPOXY	44" x 84"	30 - 36"H	NO	4	STEEL

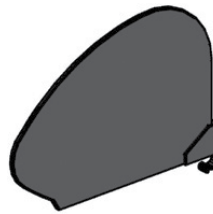
// PRIVACY PANELS AVAILABLE FOR ALL MODELS

AXIS INFINITY SINK



Molded epoxy resin sink
 19-1/2 gallon
 Two-tiered w/ drain grooves
 Anti-splash feature
 Fits large dissection trays

AXIS PRIVACY PANEL



PRODUCT NUMBER	PANEL
PPA0001	14"H x 19"D
PPA0001K	14"H x 19"D

// FOR 3-PANEL KIT